

BEAUTIFULLY
POWERFUL

EMBARK

2012



EMBARK® | MOTORHOMES BY JAYCO®

AMERICA'S MOST LIVEABLE RVs.



EMBARK | MOTORHOMES

BEAUTIFULLY
POWERFUL



EMBARK TB390 | CHAMPAGNE



EMBARK QX390 | CASHMERE



EMBARK QX390 | CASHMERE



EMBARK QX390 | CASHMERE

SUPERIOR STRENGTH, COMFORTABLY APPOINTED

The 2012 Jayco Embark delivers an unprecedented blend of performance and control. Built on a Freightliner M2 chassis with a robust 8.3L, 330 HP Cummins ISC diesel engine, Embark boasts 10 tons of towing capacity. The well-appointed interior includes such amenities as solid surface countertops, Washington Glazed Maple solid hardwood cabinetry and distressed nickel hardware, for a level of comfort rivaling the finest five-star hotels.



NOBODY OFFERS A BETTER WARRANTY THAN WE DO

YOU WANT YOUR RV TO LAST A LONG TIME.

That's why we offer our exclusive 2-year Co-Pilot Warranty, the best and most comprehensive warranty program in the industry. Every Jayco RV undergoes rigorous quality control testing before it leaves the factory, so you can be confident your new Jayco will continue to provide the ultimate in liveability and reliability for years to come.

For a copy of our 2-year limited warranty with full terms and conditions, ask your local Jayco dealer.

ROADSIDE ASSISTANCE

Travel worry-free with Jayco's Customer First Roadside Assistance program, yours at no cost during your first year of ownership. This program is offered through National Motor Club, the largest RV emergency road service in the country, and gives you immediate access to dependable roadside assistance and support services with a simple phone call.



TO LEARN MORE ABOUT OUR QUALITY CONTROL TESTING, SCAN HERE WITH YOUR SMARTPHONE.



TRUE VALUE OF OWNERSHIP

↑ MORE STANDARD FEATURES

We pack more standard features into our RVs than anyone else. Even better, they're features we know you'll want, designed to make your motorhome more home-like, comfortable and convenient. Because at Jayco, it's always been about liveability.

↑ BRAND-NAME COMPONENTS

We like living up to the name we've built for ourselves. That's why we only use dependable components in our RVs, made by companies that value their reputation as much as we do ours.

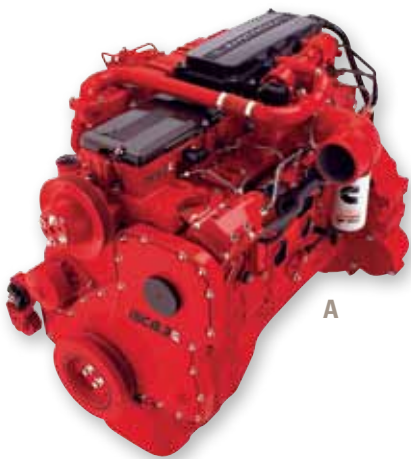
↑ LESS MAINTENANCE

Our top-quality materials and production techniques let you spend more time enjoying your new RV and less time maintaining it.

↑ BETTER AVERAGE RESALE VALUE

In the last three years, Jayco owners have been banking on their investments. According to the NADA, Jayco's average resale value was 4.81% higher than the competition, giving Jayco the top resale value in the RV industry.

With Jayco, you get more amenities, more liveable, home-like features and superior construction for less maintenance and greater resale value. **Simply put, you won't find another RV packed with more TRUE VALUE.**



A



B



C

SETTING THE BAR FOR PERFORMANCE

At Jayco, we believe in making our motorhomes well-oiled machines, so we don't skimp on standards that give you power. With Embark's **A** | Cummins ISC 8.3L, 330 HP diesel engine, plus a 3200 TRV six-speed Allison automatic transmission and a **B** | 20,000-lb. rated hitch, you can easily tow up to 10 tons. Plus, with **C** | lap belts for every built-in seating position, you'll be safe.

HIGH-END FEATURES

Embark offers up top-notch names with its **A** | quiet, fuel-efficient Onan generator (a standard feature on the Embark), **B** | the convenient, everything-at-your-fingertips Multiplex lighting system and **C** | an exterior entertainment system with AM/FM/CD/DVD and 32" LCD HDTV (Customer Value Package).



A



B



C



A



B

MORE CONVENIENCE, LESS MAINTENANCE

We want your motorhome to be easy to use and maintain. With Embark's **A** | extra-large pass-through storage with durable side-hinged baggage doors, stowing away your things has never been more convenient. Meanwhile, the **B** | gel-coated fiberglass exterior with premium full-body paint package and optional Diamond Shield paint protection offers a stunning, easy maintenance package that withstands use and travel.



A



B

THE IMPORTANT DETAILS

Years down the road, Embark will still be a dream on wheels. With **A** | a Freightliner Business Class M2 102 chassis that delivers a surprisingly tight 55-degree turning radius, Embark will be easy to maneuver now—and later. And with other fine details like **B** | Washington Glazed Maple solid hardwood cabinetry and distressed nickel hardware, we know your motorhome will hold its value years from now.

JAYCO CONSTRUCTION

At Jayco, we've built a reputation for superior construction and craftsmanship. We always use top-quality materials and innovative manufacturing techniques—down to the smallest details. The result? Unmatched resale value and peace of mind in an RV that's built to handle whatever the road throws at it, while outlasting everything but your memories.



OLD WORLD CRAFTSMANSHIP

Jayco's dedicated production team includes Amish craftsmen who build with well-honed woodworking techniques passed down for generations.



ELECTRIC SLIDEOUT SYSTEM

Wiring in our electric slideout system is enclosed to prevent tangling, while the cog-drive is more reliable and less prone to jamming.



All Jayco products are green certified. Embark received a gold rating through use of sustainable materials, environmentally friendly production methods and reduction of waste.



WALL CONSTRUCTION

- 1 Vacuum-bonded layers:** Involves 15-18 minutes of 144 tons of pressure to ensure a stronger bond
- 2 Gel-coated fiberglass exterior and premium-full body paint package with optional Diamond Shield paint protection:** Withstands use and travel while creating a stunning exterior package
- 3 Welded aluminum frames with metal backers:** Creates Embark's long-lasting framework

FLOOR CONSTRUCTION

- 4 Vacuum-bonded layers:** Backed by computer monitoring and constant quality control checks, Jayco prides itself on building a solid foundation
- 5 Aluminum frame:** Lighter than wood, it doesn't weigh the Embark down, so you can tow a boat, vehicle, or trailer with your 20,000-lb. hitch
- 6 Structurwood floors:** Creates one of the industry's strongest foundations

ROOF CONSTRUCTION

- 7 Vacuum-bonded layers:** Laminates materials together using more pressure than typical pinch-roll process
- 8 Seamless fiberglass shield:** Features one-piece construction, ensuring better leak protection
- 9 3/16" plywood decking on 5" arched welded aluminum trusses:** More moisture resistant, plywood holds up to the elements
- 10 Bead-foam insulation (R-23):** Maintains interior temperatures

PERFORMANCE

- 11 Freightliner Business Class M2 106 chassis:** Delivers surprisingly tight 55-degree turning radius
- 12 Cummins ISC 8.3L 330 HP diesel engine:** Boasts 10 tons of unbridled towing power
- 13 Rear air-ride suspension:** Makes for a smoother, more enjoyable ride
- 14 Seamless front and rear fiberglass caps:** Increases aerodynamics while adding durability and leak protection where it's needed the most

STANDARDS AND OPTIONS

STANDARD INTERIOR EQUIPMENT

- 1.4 cu. ft. convection microwave oven with carousel
- 10 cu. ft. flush-mount refrigerator with ice maker
- 15,000-BTU low-profile central A/C with heat pump and quick-cool feature
- Auto-ignition furnace with digital thermostat
- Ball bearing drawer guides, 75-lb. capacity with full-drawer extension
- Cable TV hookup with RG6 coax
- Crank-up digital antenna for TV with signal booster
- Entertainment center, includes 32" digital LCD HDTV
- Fiberglass radius shower
- Hardwood cabinetry crafted with screwed-stile construction
- High-rise single-lever faucet with pull-out sprayer
- Lap safety belts in living area
- LG countertops with partially recessed vessel sink in bathroom
- LG kitchen countertops with integrated sink bowls
- Optima leather hide-a-bed sofa
- Prep for satellite dish for roof and sidewall
- Queen bed with pillowtop mattress
- Recessed 3-burner range with 9,000-BTU SuperBurner and piezo igniter
- Residential hardwood plank flooring
- Residential laminate bathroom flooring
- Residential-style dresser in bedroom
- Thetford porcelain stool with foot flush
- Washington Glazed Maple solid hardwood cabinetry and raised-panel doors throughout
- Water purification system

STANDARD EXTERIOR EQUIPMENT

- 12V electrical system with 120V, 80-amp power converter
- 50-amp power cord
- 84" tall fiberglass, radius-cornered curved entrance door and screen door
- 106-lb. propane gas tank, chassis-mounted
- 1,800-watt inverter with 4 batteries
- Carefree 120V Apex electric roof-mounted patio awning

- Entry door keyless touch pad entry lock system
- Fiberglass caps on front and rear with radius corners
- Heavy-duty grab handle for entry assistance
- Hydraulic automatic leveling jacks
- Onan 8,000-watt Quiet Diesel generator with auto-changeover
- Onan Energy Command center
- One-piece fiberglass roof
- One-piece polyethylene pass-through storage compartments
- Premium Paint Package: Espresso
- Side-hinged baggage doors
- Sliding battery tray
- Smooth gel-coat fiberglass exterior walls
- Systems monitor panel
- Thermal pane tinted safety-glass windows
- TuffShell vacuum-bonded 5" crowned laminated roof
- TuffShell vacuum-bonded laminated curved sidewalls
- Uni-Dock utility center, heated and enclosed
- Unitized, 1-1/2" laminated construction of floor
- Water heater bypass system
- Welded tubular-aluminum sidewall framework

STANDARD CAB EQUIPMENT

- 3-point, lap and shoulder safety belts (driver and passenger)
- 12V auxiliary in-dash receptacle
- Auxiliary start switch
- Chassis battery disconnect
- One-piece 2,500-sq. in. windshield
- Privacy curtains for cab area
- Upgraded driver/passenger seat with full front/back adjustment and map pockets

STANDARD CHASSIS EQUIPMENT

- 2 chassis batteries
- 4.78 rear axle ratio
- 6-speed automatic Allison 3200 TRV Series transmission with overdrive
- 22.5" radial tires
- 55-degree turning radius

- 160-amp alternator
- 12,000-lb. front axle with taper-leaf suspension
- 20,000-lb. hitch with 7-pin plug
- 21,000-lb. rear axle with airliner suspension
- 120,000-KSI frame
- Accuride aluminum rims
- Air brakes with anti-lock braking system
- Air inflation hose
- Cummins ISC 8.3L engine with 330 HP, 1,000-lb.-ft. torque at 1,400 RPM
- Deluxe, heated, remote-control, side-view mirrors
- Driver-controlled axle lock
- Dual rear leveling valves
- Engine exhaust brake
- Freightliner Business M2 106 chassis
- Transmission temperature gauge

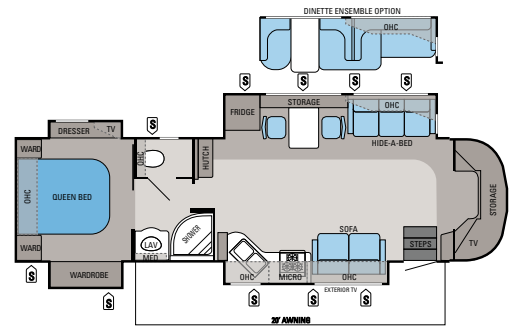
OPTIONS

- 12 cu. ft. refrigerator with ice maker (TB390)
- Booth dinette
- Customer Value Package
- Diamond Shield paint protection film
- Dyson vacuum
- Exterior refrigerator/freezer
- In-motion Minimax satellite dish
- Leather furniture upgrades
- Leather hide-a-bed
- Power electric cord reel
- Premium Paint Package: Decatur Buff
- Satellite kit
- Select Comfort Sleep Number mattress
- Sirius satellite radio system
- Ultraleather dinette and sofa ensemble

CUSTOMER VALUE PACKAGE

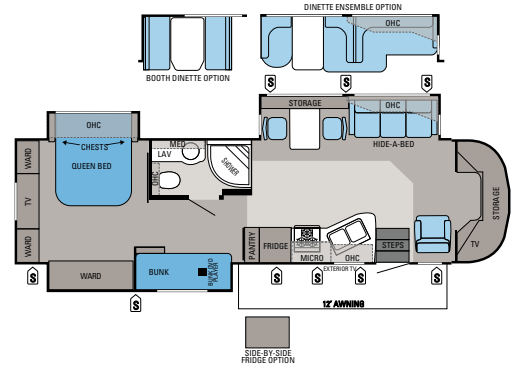
- Attic fan
- Bathroom power vent
- Exterior entertainment center with AM/FM/CD/DVD stereo and 32" digital LCD HDTV
- Pleated day/night shades
- Powered driver and passenger seat
- Radius-glass shower door
- Xite infotainment system with in-dash touchscreen radio, 7" color LCD display, DVD/USB, Sirius satellite prep, Bluetooth, navigation and split screen

FLOORPLANS



EMBARK | QX390

Ext. Length: 39' 10" Ext. Height: 150" Sleeps: 4-6



EMBARK | TB390

Ext. Length: 39" Ext. Height: 150" Sleeps: 5-7

EXTERIOR PAINT OPTIONS



ESPRESSO PREMIUM PAINT (STANDARD)



DECATUR BUFF PREMIUM PAINT (OPTIONAL)

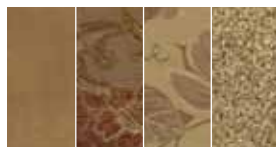
SPECIFICATIONS

FLOORPLAN	EXT. LENGTH	EXT. WIDTH	EXT. HEIGHT (WITH A/C)	INT. HEIGHT	GROSS VEHICLE WEIGHT RATING (LBS.)	GROSS COMBINED WEIGHT RATING (LBS.)	ENGINE/SIZE	WHEEL BASE	FURNACE AUTO-IGNITION (BTU)	FRESH WATER CAPACITY (INCLUDES WATER HEATER) (GALS.)	GRAY WASTE WATER CAPACITY (GALS.)	BLACK WASTE WATER CAPACITY (GALS.)
QX390	39' 10"	102"	150"	80"	33,000	53,000	CUMMINS ISC-330 8.3L	275"	40M	105	52	51.5
TB390	39'	102"	150"	80"	33,000	53,000	CUMMINS ISC-330 8.3L	275"	40M	105	52	52

INTERIOR DÉCOR CHOICES



CASHMERE



CHAMPAGNE



IVORY



WOOD



FOR A COMPLETE LIST OF STANDARDS AND OPTIONS, SCAN HERE WITH YOUR SMARTPHONE OR VISIT JAYCO.COM.

A TRADITION OF LIVEABILITY

THE JAYCO STORY BEGAN IN 1968 when Jayco founder Lloyd Bontrager created an innovative, easy-to-use lifter system that led to a better fold-down camper. Loaded with more comforts and conveniences, Lloyd believed his camper would bring people closer together because it was more liveable. A devoted family man, Lloyd's passion extended to his business as well. In fact, our company's success stems from his insistence on treating everyone at Jayco as family — from our factory to our front office, our salespeople to our suppliers, and our customers to our community.

BLENDING OLD WORLD AMISH CRAFTSMANSHIP WITH INNOVATIVE TECHNOLOGY, Jayco is the nation's largest family-owned and operated RV manufacturer today. And while our product line has grown considerably over the years, every unit we build is still guided by Lloyd's vision and a humble desire to help make it easier for families to explore together and relax together. It's what separates us from other RV manufacturers. And it's what continues to make Jayco America's Most Liveable RVs.



AMERICA'S MOST **LIVEABLE** RVs.



Jayco proudly sponsors Tread Lightly!, a nonprofit organization whose mission is to empower generations to enjoy the outdoors responsibly through education and restoration.



From RV insurance to extended warranties, JayPlus has it covered. Ask your Jayco dealer about our exclusive JayPlus program today.



As a Jayco owner, you can be part of the Jayco Jafari International Travel Club. Ask your dealer about the Jafari "flight" in your area, write Jayco or visit our website.

Gross Vehicle Weight Rating (GVWR): The maximum permissible weight of the motorhome, including the Unloaded Vehicle Weight (UVW) plus passengers, personal items, all cargo, fluids, options and dealer-installed accessories. The GVWR is equal to or greater than the sum of the UVW and the Cargo Carrying Capacity.

Gross Combined Weight Rating (GCWR): The maximum allowable combined weight of the motorhome used as a tow vehicle and the attached towed vehicle.

It is important for your safety and enjoyment that you are aware of the weights and tow ratings of the RV you select. Consult a competent advisor for questions or advice. Whether you are new to RVing or a veteran, get a feel for the performance

of your RV before heading out on the roadways. When you tow a vehicle with your RV, you must drive differently than when you drive a single vehicle. Practice hooking up, driving, backing up and braking in a safe environment or seek out professional instruction. Jayco affixes a weight label to each RV which lists weight information for that vehicle. Refer to that label to verify the vehicle will meet your requirements. See specifications chart inside.

Jayco, Inc., P.O. Box 460, Middlebury, IN 46540, www.jayco.com 

See dealer for further information and prices. All information in this brochure is the latest available at the time of publication approval. Jayco reserves the right to make changes and to discontinue models without notice or obligation. Photos in this brochure may show optional equipment and props for photography purposes. RVs built for sale in Canada may differ to conform to Canadian codes. ©2011 Jayco, Inc. 12-EMBK-PL 0611-75K Printed in U.S.A.