

ULTIMATE
ULTRA LITE

JAY FEATHER

ULTRA LITE

2012



JAY FEATHER ULTRA LITE® | TRAVEL TRAILERS BY JAYCO®

AMERICA'S MOST LIVEABLE RVs.



JAY FEATHER ULTRA LITE



ULTIMATE ULTRA LITE



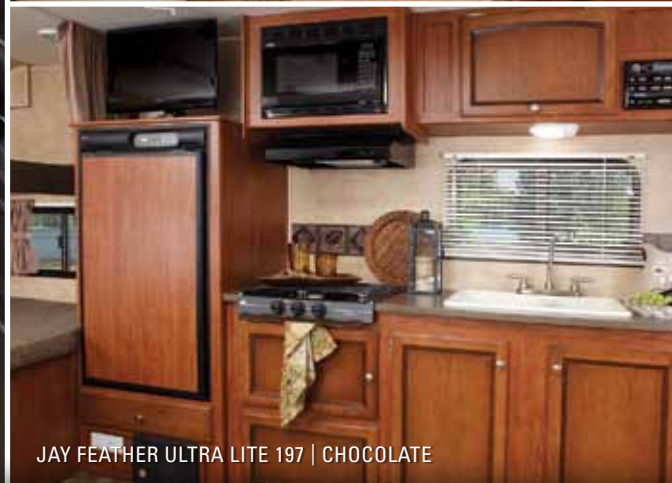
JAY FEATHER ULTRA LITE X20E | CHOCOLATE



JAY FEATHER ULTRA LITE 197 | CHOCOLATE



JAY FEATHER ULTRA LITE X20E | CHOCOLATE



JAY FEATHER ULTRA LITE 197 | CHOCOLATE

THE INDUSTRY'S LEADING ULTRA LITE

Blending intelligent interior design with advanced construction techniques and an E-coated steel frame, the 2012 Jay Feather Ultra Lite travel trailer delivers heavy-weight performance in a lightweight package. In fact, it's light enough to be towed by most SUVs, minivans and crossovers,* yet spacious enough to accommodate most families. Solidly built and affordably priced, the Jay Feather Ultra Lite proves spending less doesn't mean settling for less.

* Consult with your authorized automobile manufacturer or vehicle owner's manual.

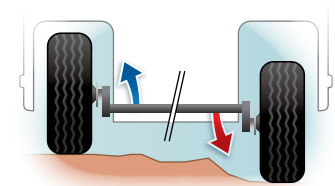
JAYCO CONSTRUCTION

At Jayco, we've built a reputation for superior construction and craftsmanship. We always use top-quality materials and innovative manufacturing techniques—down to the smallest details. The result? Unmatched resale value and peace of mind in an RV that's built to handle whatever the road throws at it, while outlasting everything but your memories.



OLD WORLD CRAFTSMANSHIP

Jayco's dedicated production team includes Amish craftsmen who build with well-honed woodworking techniques passed down for generations.



INDEPENDENT SUSPENSION

Jay Feather's independent torsion-axle suspension transfers road shock, while the rubberized system limits vibration, decreasing wear-and-tear on your RV.



All Jayco products are green certified. Jay Feather earned a gold rating through use of sustainable materials, environmentally friendly production methods and reduction of waste.



WALL CONSTRUCTION

- 1 Vacuum-bonded layers:** Involves 15-18 minutes of 144 tons of pressure to ensure a strong bond
- 2 Welded aluminum frames with metal backers:** Lighter than wood, increases towability
- 3 Extra-wide corner seals:** Prevents leaks on the corner molds, baggage and entrance doors and window seals
- 4 Innovative, aerodynamic front profile:** Eliminates angled profile, increasing towability

FLOOR CONSTRUCTION

- 5 Vacuum-bonded layers:** Backed by computer monitoring and constant quality control checks, Jayco prides itself on building a solid foundation
- 6 Bead-foam insulation (R-9):** Maintains interior temperatures
- 7 Norco E-coated, light-weight steel frame:** E-coat prevents rust; structure features industry's strongest strength-to-weight ratio with one-piece I-beam construction
- 8 Innovative A-frame:** Fully integrated, and not welded, prevents buckling

ROOF CONSTRUCTION

- 9 Vacuum-bonded layers:** Laminates materials together using more pressure than typical pinch-roll process
- 10 Seamless rubber roof:** Features one-piece construction, ensuring better leak protection
- 11 Aluminum frames:** Increases towability while adding durability
- 12 Lauan plywood:** More moisture resistant, plywood holds up to rain
- 13 Bead-foam insulation (R-21):** Maintains interior temperatures

TENT DESIGN

- 14 Reversed cambered-support:** Creates durable structure rated to hold 1,050 pounds
- 15 Hook tent frame:** Creates more headroom than competing tents
- 16 5" bed mats:** Provide comfort
- 17 DuraTek water-repellent vinyl tent material:** Resists mildew, mold, scratches and cracks, while double-stitched design adds strength
- 18 Permanent tent-to-bunk attachment system with channel locks:** Eliminates misplaced poles, uses innovative Velcro system



TRUE VALUE OF OWNERSHIP

With Jayco, you get more amenities, more liveable, home-like features and superior construction for less maintenance and greater resale value. **Simply put, you won't find another RV packed with more TRUE VALUE.**

↑ MORE STANDARD FEATURES

We pack more standard features into our RVs than anyone else. Even better, they're features we know you'll want, designed to make your RV more liveable.

MAKING THE MOST OF SPACE

Jay Feather's space-saving floorplans give you everything you need, including **A** | pleated night shades, residentially-styled furniture designed and made by Jayco, **B** | Concord Cherry hardwood cabinetry and **C** | wall-to-wall Diamondflor vinyl flooring for the ultimate level of liveability.



↑ LESS MAINTENANCE

Our top-quality materials and production techniques let you spend more time enjoying your new RV and less time maintaining it.



PUTTING THE FOCUS ON CAMPING

At Jayco, we want your RV to be easy to use. That's where the Jay Feather's **A** | full-extension ball bearing drawer guides and **B** | optional electric awning come in. And with our awning's push-button adjustable pitch, it's easier than ever to adjust it for desired shade and water runoff. Meanwhile, our **C** | durable metal cabinet hinges and **D** | heavy-duty, metal alloy faucet fittings are built to hold up to constant use.

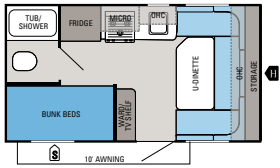


NOBODY OFFERS A BETTER WARRANTY THAN WE DO

Our exclusive 2-year Co-Pilot Warranty is the best and most comprehensive warranty program in the industry. Every Jayco RV undergoes rigorous quality control testing before it leaves the factory, so you can be confident your new Jayco will continue to provide the ultimate in liveability and reliability for years to come.

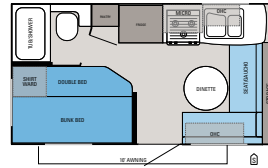
For a copy of our 2-year limited warranty with full terms and conditions, ask your local Jayco dealer.

TRAVEL TRAILER FLOORPLANS



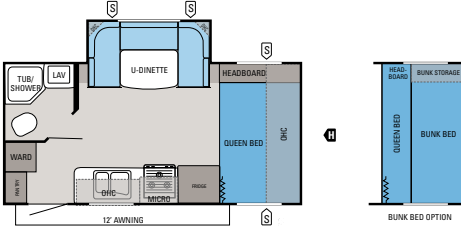
JAY FEATHER ULTRA LITE | 16V

Ext. Length: **TBD** Ext. Height: **TBD** Unloaded Wt. (lbs.): **TBD** Sleeps: **3-4**



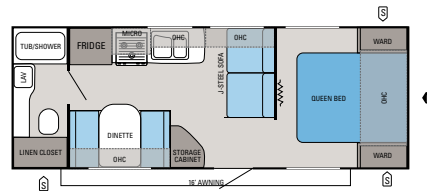
JAY FEATHER ULTRA LITE | 16S

Ext. Length: **18'** Ext. Height: **115"** Unloaded Wt. (lbs.): **2,610** Sleeps: **4-5**



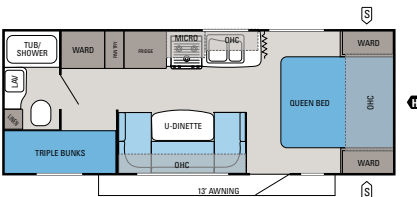
JAY FEATHER ULTRA LITE | 197

Ext. Length: **20' 11"** Ext. Height: **121"** Unloaded Wt. (lbs.): **3,425** Sleeps: **3-5**



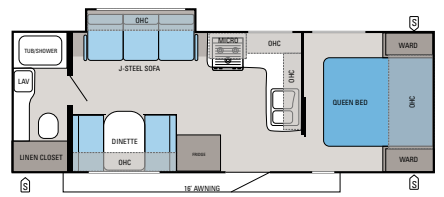
JAY FEATHER ULTRA LITE | 221

Ext. Length: **26' 1"** Ext. Height: **120"** Unloaded Wt. (lbs.): **3,565** Sleeps: **4-6**



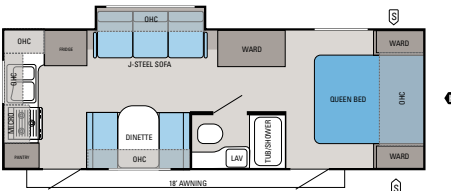
JAY FEATHER ULTRA LITE | 228

Ext. Length: **25' 9"** Ext. Height: **118"** Unloaded Wt. (lbs.): **3,620** Sleeps: **6-7**



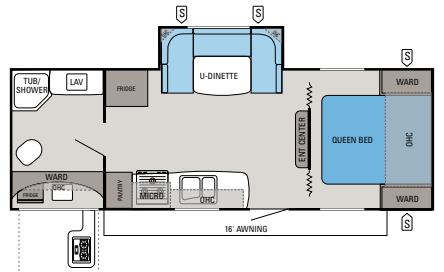
JAY FEATHER ULTRA LITE | 24T

Ext. Length: **27' 8"** Ext. Height: **124"** Unloaded Wt. (lbs.): **4,270** Sleeps: **4-6**



JAY FEATHER ULTRA LITE | 242

Ext. Length: **27' 9"** Ext. Height: **124"** Unloaded Wt. (lbs.): **4,400** Sleeps: **4-6**

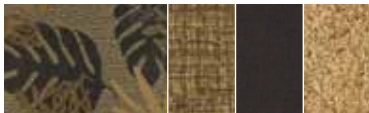


JAY FEATHER ULTRA LITE | 254

Ext. Length: **28' 2"** Ext. Height: **120"** Unloaded Wt. (lbs.): **4,240** Sleeps: **3-4**

INTERIOR DÉCOR CHOICES

CHOCOLATE



COPPER



WOOD



STANDARDS AND OPTIONS

STANDARD INTERIOR EQUIPMENT

- ↑ Ball bearing drawer guides, 50 lb. capacity with full-drawer extension
- ↑ Concord Cherry hardwood cabinet doors
- ↑ High-efficiency Atwood appliance collection (water heater and furnace)
- ↑ Large MaxView tinted safety-glass windows
- ↑ Poleless tent end cable support system with Head Room technology (expandable models)
- ↑ Pleated shades throughout
- ↑ Pocket screwed cabinetry
- ↑ Residential furniture, cushions and window treatments designed and made by Jayco
- ↑ Wall-to-wall Diamondfloor vinyl flooring

STANDARD EXTERIOR EQUIPMENT

- ↑ Aerodynamic, rounded front profile
- ↑ DuraTek water-repellent vinyl tent (expandable models)

E-coated Norco, stamped steel, tapered light-weight frame (n/a 16S)

- ↑ Electric powered slideouts (select models)
- ↑ Heavy-duty fiberglass fender skirts with impact resistant wheel wells
- ↑ Radiused, laminated entrance and baggage doors
- ↑ TorFlex independent torsion-axle rubber ride suspension system
- ↑ TuffShell vacuum-bonded laminated floor, sidewalls, front-end wall and crowned roof

OPTIONS

6 cu. ft. refrigerator
 6 gal. gas water heater
 Aluminum rims
 Carefree adjustable pitch electric patio awning (select models)
 Customer Value Package with 15,000-BTU A/C

Folding table with bench seat (X18D)

- ↑ High-efficiency Atwood oven
- ↑ Outside grill
- ↑ Power tongue jack
- ↑ Queen bed with bunk (197)
- ↑ Satellite kit
- ↑ Technology Package

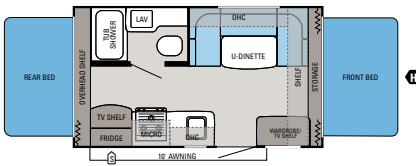
CUSTOMER VALUE PACKAGE

- ↑ 13,500-BTU A/C
- ↑ ABS bottle cover
- ↑ Dual 20-lb. propane bottles with regulator
- ↑ Microwave oven with carousel
- ↑ Spare tire carrier
- ↑ Water heater bypass system

TECHNOLOGY PACKAGE

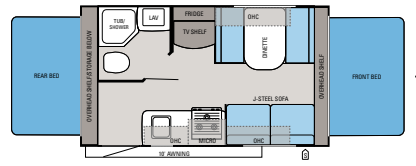
- ↑ 22" LCD HDTV
- ↑ AM/FM/CD/DVD with exterior speakers (select models)

EXPANDABLE FLOORPLANS



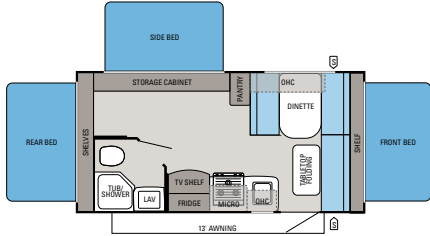
JAY FEATHER ULTRA LITE | X17A

Ext. Length: **TBD** Ext. Height: **TBD** Unloaded Wt. (lbs.): **TBD** Sleeps: **5-6**



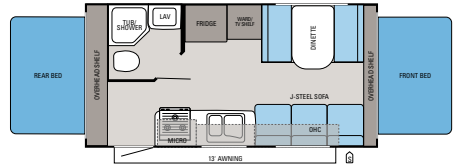
JAY FEATHER ULTRA LITE | X17Z

Ext. Length: **18' 6"** Ext. Height: **115"** Unloaded Wt. (lbs.): **2,825** Sleeps: **6-8**



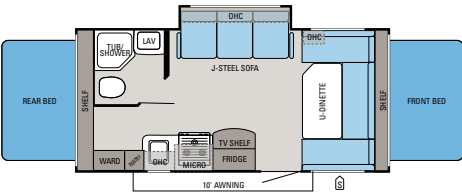
JAY FEATHER ULTRA LITE | X18D

Ext. Length: **20' 9"** Ext. Height: **119"** Unloaded Wt. (lbs.): **3,250** Sleeps: **7-8**



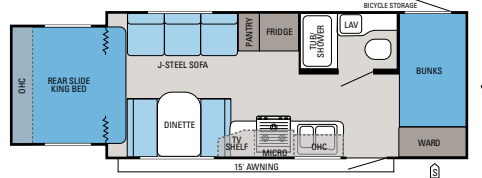
JAY FEATHER ULTRA LITE | X19H

Ext. Length: **20' 8"** Ext. Height: **117"** Unloaded Wt. (lbs.): **3,250** Sleeps: **6-8**



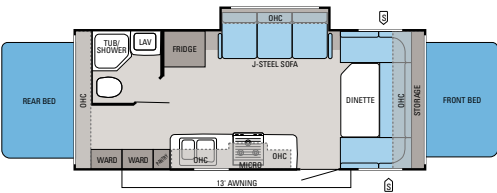
JAY FEATHER ULTRA LITE | X20E

Ext. Length: **21' 8"** Ext. Height: **120"** Unloaded Wt. (lbs.): **3,610** Sleeps: **7-8**



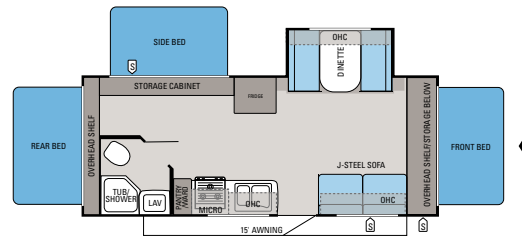
JAY FEATHER ULTRA LITE | X213

Ext. Length: **24'** Ext. Height: **118"** Unloaded Wt. (lbs.): **3,880** Sleeps: **6-8**



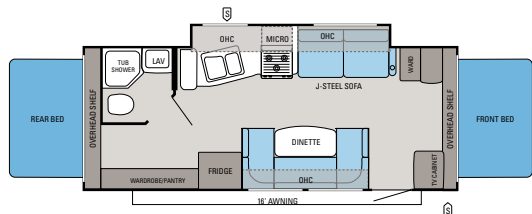
JAY FEATHER ULTRA LITE | X23B

Ext. Length: **24' 5"** Ext. Height: **118"** Unloaded Wt. (lbs.): **3,790** Sleeps: **7-8**



JAY FEATHER ULTRA LITE | X23F

Ext. Length: **24' 7"** Ext. Height: **118"** Unloaded Wt. (lbs.): **4,025** Sleeps: **8-10**



JAY FEATHER ULTRA LITE | X23J

Ext. Length: **25' 2"** Ext. Height: **120"** Unloaded Wt. (lbs.): **4,190** Sleeps: **6-8**

- STORAGE
- TRAILER HITCH
- LAV BATHROOM SINK
- MICRO MICROWAVE
- OHC OVERHEAD CABINETS
- FRIDGE REFRIGERATOR
- WARD WARDROBE



FOR A COMPLETE LIST OF STANDARDS AND OPTIONS, SCAN HERE WITH YOUR SMARTPHONE OR VISIT JAYCO.COM.

SPECIFICATIONS

FLOORPLAN	EXTERIOR LENGTH	EXTERIOR WIDTH	EXTERIOR HEIGHT (WITH A/C)	INTERIOR HEIGHT	UNLOADED VEHICLE WEIGHT (LBS.)	DRY HITCH WEIGHT (LBS.)	GROSS VEHICLE WEIGHT RATING (LBS.)	CARGO CARRYING CAPACITY (LBS.)	FRESH WATER CAPACITY (GAL.) (WITH WATER HEATER)	GRAY WASTEWATER CAPACITY (GAL.)	TOILET/BLACK WASTEWATER CAPACITY (GAL.)
16V	TBD	96"	TBD	78"	TBD	TBD	TBD	TBD	TBD	TBD	TBD
185	18'	96"	115"	78"	2,610	420	3,500	890	30	30.5	11
197	20' 11"	96"	121"	78"	3,425	455	4,750	1,325	28.5	30.5	22.5
221	26' 1"	96"	120"	78"	3,565	510	4,950	1,385	28.5	30.5	30.5
228	25' 9"	96"	118"	78"	3,620	375	4,950	1,330	28.5	30.5	22.5
24T	27' 8"	96"	124"	78"	4,270	545	6,250	1,980	28.5	30.5	22.5
242	27' 9"	96"	124"	78"	4,400	555	6,500	2,100	28.5	45.0	30.5
254	28' 2"	96"	120"	78"	4,240	430	6,400	2,160	28.5	30.5	22.5
X17A	TBD	96"	TBD	78"	TBD	TBD	TBD	TBD	TBD	TBD	TBD
X17Z	18' 6"	96"	115"	78"	2,825	400	3,500	675	28.5	30.5	22.5
X18D	20' 9"	96"	119"	78"	3,250	440	4,400	1,150	28.5	30.5	22.5
X19H	20' 8"	96"	117"	78"	3,250	410	4,950	1,700	28.5	30.5	22.5
X20E	21' 8"	96"	120"	78"	3,610	440	4,750	1,140	28.5	30.5	22.5
X213	24'	96"	118"	78"	3,880	450	5,500	1,620	28.5	30.5	22.5
X23B	24' 5"	96"	118"	78"	3,790	405	4,950	1,160	28.5	29.5	22.5
X23F	24' 7"	96"	118"	78"	4,025	445	4,995	970	28.5	30.5	22.5
X23J	25' 2"	96"	120"	78"	4,190	525	6,500	2,310	28.5	30.5	22.5

A TRADITION OF LIVEABILITY

THE JAYCO STORY BEGAN IN 1968 when Jayco founder Lloyd Bontrager created an innovative, easy-to-use lifter system that led to a better fold-down camper. Loaded with more comforts and conveniences, Lloyd believed his camper would bring people closer together because it was more liveable. A devoted family man, Lloyd's passion extended to his business as well. In fact, our company's success stems from his insistence on treating everyone at Jayco as family — from our factory to our front office, our salespeople to our suppliers, and our customers to our community.

BLENDING OLD WORLD AMISH CRAFTSMANSHIP WITH INNOVATIVE TECHNOLOGY, Jayco is the nation's largest family-owned and operated RV manufacturer today. And while our product line has grown considerably over the years, every unit we build is still guided by Lloyd's vision and a humble desire to help make it easier for families to explore together and relax together. It's what separates us from other RV manufacturers. And it's what continues to make Jayco America's Most Liveable RVs.



AMERICA'S MOST **LIVEABLE** RVs.



Jayco proudly sponsors Tread Lightly!, a nonprofit organization whose mission is to empower generations to enjoy the outdoors responsibly through education and restoration.

Unloaded Vehicle Weight (UVW): Sometimes referred to as "Dry Weight," UVW means the typical weight of this trailer as built at the factory. The UVW, as used in product literature and other promotional materials, does not include cargo, fresh water, propane, options or dealer-installed accessories.

Gross Vehicle Weight Rating (GVWR): GVWR means the maximum permissible weight of the trailer, including the UVW plus passengers, personal items, all cargo, fluids, options, and dealer-installed accessories. The GVWR is equal to or greater than the sum of the UVW and the CCC.



From RV insurance to extended warranties, JayPlus has it covered. Ask your Jayco dealer about our exclusive JayPlus program today.

Cargo Carrying Capacity (CCC): CCC means the maximum weight of all passengers, personal items, food, fresh water, propane, tools, other cargo and dealer-installed accessories that can be carried by the trailer. CCC is equal to or less than GVWR minus UVW. The addition of options will decrease the CCC.

Hitch Weight (HW): The hitch weight, as used in product literature and other promotional materials, does not include cargo, fresh water, propane gas, options or dealer-installed accessories. The addition of these types of items will either add to or subtract from the stated hitch weight.



As a Jayco owner, you can be part of the Jayco Jafari International Travel Club. Ask your dealer about the Jafari "flight" in your area, write Jayco or visit our website.

It is important for your safety and enjoyment that your tow vehicle be adequately sized and equipped to tow and handle the GVWR of the RV you select. Review weights and rating of your tow vehicle and consult a competent advisor for questions or advice. Whether you are new to RVing or a veteran, get a feel for the performance of your tow vehicle before heading out on the roadways. When you tow an RV, you must drive differently than when you drive a single vehicle. Practice hooking up, driving, backing up and braking in a safe environment or seek out professional instruction. Jayco affixes a weight label to each RV which lists weight information for that vehicle. See specifications chart inside.

Jayco, Inc., P.O. Box 460, Middlebury, IN 46540, www.jayco.com RVIA

See dealer for further information and prices. All information in this brochure is the latest available at the time of publication approval. Jayco reserves the right to make changes and to discontinue models without notice or obligation. Photos in this brochure may show optional equipment and props for photography purposes. RVs built for sale in Canada may differ to conform to Canadian codes. ©2011 Jayco, Inc. 12-JFUL-PL 0112-30K Printed in U.S.A.