



A trip back to nature can  
change your entire outlook.



2005 Camping Trailers by Jayco - Jay Series, Select & Baja



You only have so many vacation days.  
Make the most of them.



Jay Series 806



You marked your trip on the calendar months ago. You've been saving for it even longer. Anticipation becomes unbearable as the date gets closer. You can smell the pine filling the air and hear the waves lapping the beach. You can feel the sense of freedom. Make the most of that time, and your money, with the affordable Jay Series™ camping trailer by Jayco®.

For more information go to [www.jayco.com](http://www.jayco.com).

1. Our Velcro® tent attachment system around the one-piece entrance door seals tight to keep out bugs and rain.
2. Enjoy the fresh air by dining outdoors with the white enamel carryout oven. Or just relax inside the optional deluxe screen room and leave the bugs outside.
3. Our optional portable gas barbecue RVQ® grill lets you cook outdoors. It easily mounts on the outside of the trailer and comes with a handy carrying case.





# 2005 Jay Series™ Camping Trailers



Our Camper-Tex™ one-piece vinyl tent system seals tight against rain and insects.

1. Add an optional color-coordinated wheel cover to protect your spare.
2. Protect your LP gas bottle with the optional color-coordinated cover.
3. A 17-gallon, below the floor water tank frees up cabinet space to give you more storage. It comes standard, along with a 6-gallon water heater and 12V demand pump.
4. The optional 16,000-BTU furnace with auto-ignition and thermostat lets you extend your stay when weather turns cold.



Jay Series 806 interior



Room to move. Room to breathe.  
Room to get closer to those you love.



You've spent time in the same house together. Eating dinner. Watching TV. Passing each other in the hall. Yet you've lost touch. You're not as close as you used to be. Take a trip out of your routine and find the room to come together again. The spacious interior of the Select™ camping trailer by Jayco® gives you higher walls and more headroom than a conventional camper. So you'll discover plenty of space to find each other again.

**1.** Taller wall height allows room for an optional oven with range to expand your meal choices. The fold-down range cover expands your counter space, which is at a more conventional height than other campers.

- 2.** Select has space for a large 3-cu.-ft., 3-way (110V/12V/LP gas) Norcold® refrigerator that gives you room to bring your favorite foods.
- 3.** Select's high-wall construction provides room for an optional microwave with carousel that makes cooking easy.
- 4.** Courtesy floor lights help you get around at night.
- 5.** Our beautiful, solid Westview™ maple flat-panel doors and drawers are built with strong mortise-and-tenon joints.
- 6.** A battery gauge is standard and keeps constant track of your available power.
- 7.** The fluorescent light above the kitchen sink puts ample light right where you need it.







Select 12 HW

1. Select's special construction not only makes it taller, but it also includes wide-body construction for added space. We top it with a seamless fiberglass domed roof to shrug off water.
2. Front and rear diamond plate stands tough against rocks and debris.
3. Add striking touches to your Select such as polished aluminum rims.
4. Storage beneath the dinette gives you extra space. The front trunk has room for loads of gear, even longer items. You can access gear in both areas from the inside and outside, even when the bunks are set up.



Select 12 HW interior



Not a person in sight ... twenty miles from the nearest phone ... days away from home. Perfect.



Baja 10 Z



You camp in primitive country where you feel a part of your surroundings. Far away from the comforts of traditional campsites. A place that challenges you and fuels your desire to scale steep peaks, bike down rocky hillsides and backpack through unexplored country. Wherever that desire leads you, Baja™ camping trailers by Jayco® put you there. Right where you belong.

1. Store tools and other items in the optional diamond plate tool box.
2. Get power to stay anywhere with the optional 2,800-watt Onan® MicroLite™ generator.
3. The optional battery gauge keeps constant track of your available power.

4. Get great traction over rugged terrain with 15" Dunlop® Mud Rover off-road tires with aluminum rims. Rubber fenders won't dent and protective mud flaps are standard equipment.
5. Baja gives you a full 13" of ground clearance to cover rough terrain and reach places others can't.





Your music goes anywhere with the optional AM/FM stereo with CD player.



1. Grab the optional 12V rechargeable spotlight when you need quick illumination.
2. Diamond plate protects the front of your camper while the optional vinyl cover protects your twin LP gas bottles. The front deck holds options such as a fuel tank, tool box and generator.
3. Diamond plate and heavy-duty tubular steel bumper protect the rear, while an optional vinyl tire cover protects your optional spare.
4. The retractable double step makes climbing in and out safe and easy.
5. Shock absorbers and leaf springs provide smooth towing over rough terrain.



Baja 10 Z interior



# Built to turn tough environments into a gentle night's sleep.

Jayco's exclusive one-piece, double-stitched, water-repellent Camper-Tex™ vinyl tent is manufactured in our sewing department and comes with a five-year warranty. We avoid the bug holes and loose seams that come standard with competitors' cheaper sectionalized, single-stitched tent construction.

Our unique Velcro® tent-to-bunk end attachment system is stronger than the bungee cord system used by our competitors.



Our single-piece Structurwood® floor is undercoated and edge-sealed to keep out moisture and stand strong for years. It comes with a lifetime warranty.

E-Z Lube® axles with removable caps make maintenance simple.



The self-storing step makes climbing in and out easier (standard on Select™, double entrance step standard on Baja™).

Our laminated seamless fiberglass domed roof comes with a lifetime warranty.

Our Velcro® entrance door tent attachment system forms a tight seal.

Jayco's exclusive SoftShade™ window treatments offer you flexibility. They can be used as roll-up shades or as conventional drapes.

An optional 12V attic fan, separate from the optional roof vent, improves ventilation for greater comfort.



The reversible, non-slide dinette cushions with vinyl backs clean up easily. Simply wipe off or unzip to remove for thorough cleaning.



Optional deluxe quilted and heated bed mats keep you warm on cold nights.



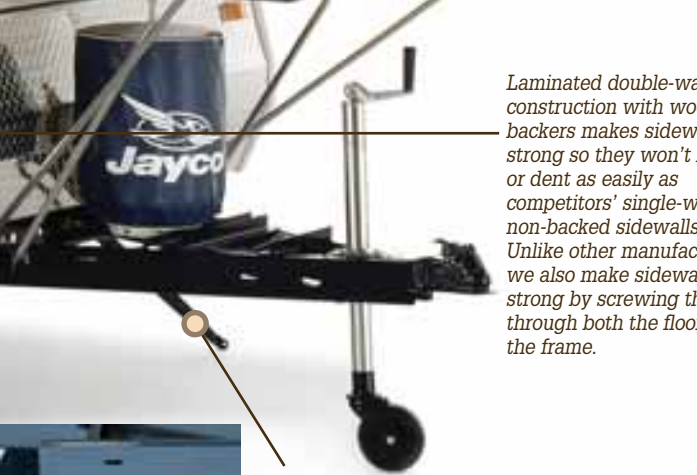


One or two optional end bunk lights, combined with a built-in two-speed fan, give you ample light at night and better ventilation.

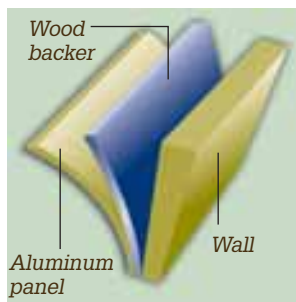
In the heart of the Midwest, old-world craftsmen have handed down tried-and-true construction methods from generation to generation. At our headquarters in Middlebury, Indiana, Jayco® continues this tradition when building all of our recreational vehicles. Our rugged designs, solid construction and commitment to quality add up to a well-built vehicle you can depend on for years.



Well-built end bunks handle loads of weight (1,050 lb. capacity). Made from 5-ply exterior-grade, weather-treated plywood, the bunks are mounted on steel slides with smooth rollers to let you set up easily in minutes.



Laminated double-wall construction with wood backers makes sidewalls strong so they won't bow or dent as easily as competitors' single-wall, non-backed sidewalls. Unlike other manufacturers, we also make sidewalls strong by screwing them through both the floor and the frame.



The easy-to-use crank-down stabilizer jacks mean you won't have to crouch down as far and reach underneath the camper. (Standard on rear. Front optional on Baja™. Sand pads included on Baja and Select™.)

## Patented, fully enclosed roof lifter system with lifetime warranty

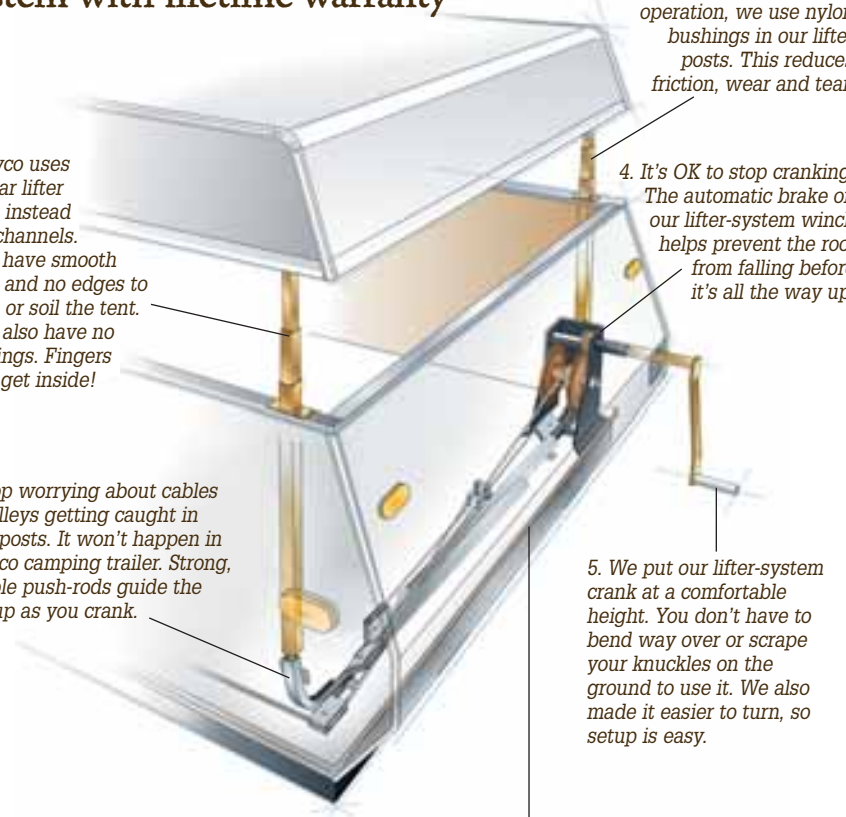
1. Jayco uses tubular lifter posts instead of C-channels. They have smooth walls and no edges to chafe or soil the tent. They also have no openings. Fingers can't get inside!

2. Stop worrying about cables or pulleys getting caught in lifter posts. It won't happen in a Jayco camping trailer. Strong, flexible push-rods guide the roof up as you crank.

3. For years of trouble-free operation, we use nylon bushings in our lifter posts. This reduces friction, wear and tear.

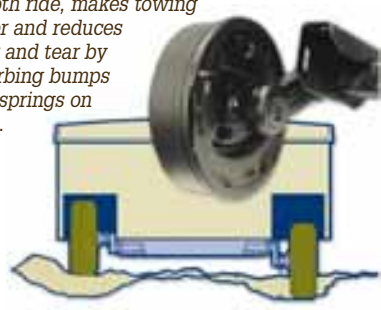
4. It's OK to stop cranking. The automatic brake on our lifter-system winch helps prevent the roof from falling before it's all the way up.

5. We put our lifter-system crank at a comfortable height. You don't have to bend way over or scrape your knuckles on the ground to use it. We also made it easier to turn, so setup is easy.



6. The roof lifter-system on all Jayco camping trailers is fully enclosed above the floor. This eliminates damage to parts from road debris and weather, a common problem with competitors' underfloor-mounted lifter systems. Our above-floor system also eliminates the rodent or insect access points that are found where competitors' cables pass through the floor.

TorFlex® independent torsion-axle suspension gives more ground clearance, provides a smooth ride, makes towing easier and reduces wear and tear by absorbing bumps (leaf springs on Baja).



Our rugged, corrosion-resistant frames feature a 12-stage E-Coat™ finishing system. The frame supports the floor to the edge, giving Jayco camping trailers unibody strength and stability. And, our frames come with a lifetime warranty.



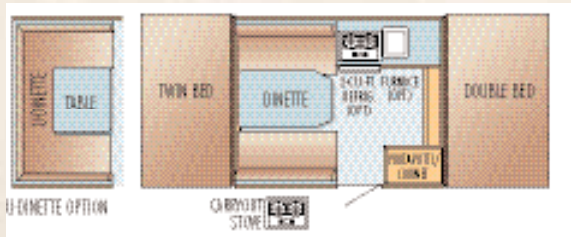


# 2005 Camping trailer standards and options

Standard Interior Equipment			Standard Exterior Equipment			Standard Heat, Power and Water		
Jay Series™	Select	Baja™	Jay Series	Select	Baja	Jay Series	Select	Baja
12V high-intensity lighting	■	■	12" C-range tires (806, 1007, 1407)	■		Double 20-lb. LP gas bottles, with vinyl cover		■
Automatic cut-off switch for interior lights	■	■	13" C-range tires (1006, 1207,1206)	■		Hookup for city water	■	■
Bar for hanging clothes		■	14" D-range tires		■			
Bed flaps that cover edge of bed	■	■	14" x 14" roof vent	■	■	<b>Standard Safety Equipment</b>	<b>Jay Series</b>	<b>Select</b>
Bunk end bows with adjustable tension	■	■	15" off-road Dunlop® Mud Rovers tires		■	Breakaway switch	■	■
Cable TV hookup with RG6 Coax		■	20-lb. LP gas bottle	■	■	Dual hitch safety chains	■	■
Clear vinyl windows	■	■	30-amp. power cord	■	■	Fire extinguisher	■	■
Deep-quilted bunk cushions	■	■	110V G.F.C.I. protected exterior receptacle	■	■	LP/gas leak detector	■	■
Door pulls with roller catch	■	■	Bumper made with welded steel construction	■	■	Smoke detector	■	■
Drawers are made of real wood and have nylon guides	■	■	Camper-Text™ water-repellent one-piece vinyl tent	■	■			
End-bunk lights with fan (1 or 2)		■	Crank-down stabilizer jacks		■	<b>Optional Equipment</b>	<b>Jay Series</b>	<b>Select</b>
Fairfield Oak cabinetry	■	■	(Sand pads standard on Baja and Select)	■	■	12V Rechargeable spot light		■
Floor-level courtesy lights		■	Diamond-plate walls on front and rear	■	■	Bath/shower package (1206, 1407)	■	■
Handsome furniture, designed and made by Jayco®	■	■	Domed, fiberglass roof with no center seam	■	■	Customer Value Package	■	■
Hinged dinette seat bases	■	■	Double entrance step		■	Deluxe screen room	■	■
Mildew-resistant aluminum ceiling	■	■	E-Coat™ protected frame	■	■	Drawer for exterior storage		■
Non-sliding, 4" deep cushions for dinette with reversible EZ-clean™ vinyl backs	■	■	Electric brakes (1206, 1407)		■	Electric brakes (STD 1206,1407)	■	■
Prep for A/C	■	■	Entrance door access with roof lowered	■	■	Extra pedestal leg with dinette table (1007,1207)	■	■
Privacy curtains for end-bunks	■	■	Entrance door is 1-piece construction	■	■	Furnace is 16,000-BTU with auto-ignition	■	■
SoftShade™ window shades and valances	■	■	Extrusions for box top are painted (powder-coated) white with white corner caps	■	■	Heated bed mat(s) (2)	■	■
Vinyl flooring	■	■	E-Z Lube® axles	■	■	Hydraulic surge brakes	■	■
Westview™ maple, flat-panel doors and drawers		■	Floor is undercoated and constructed of edge-sealed Structurwood™	■	■	Onan® MicroLite™ 2800-watt generator		■
	<b>Jay Series</b>	<b>Select</b>	Front storage deck with diamond-plate surface and deck railing		■	Oven and range with range cover		■
<b>Standard Kitchen Equipment</b>			Jayco's original, fully enclosed lifter system (same design used since 1968)	■	■	Portable, outside gas RVQ® grill with carrying case	■	■
3-cu.-ft., 3-way gas/electric refrigerator (110V/12V/LP)		■	Leveling jacks and heavy-duty A-frame construction	■	■	Powered attic fan in bathroom	■	■
6-gal. water heater (all Jay Series except 806)	■	■	Lifter post covers	■	■	Tool box		■
12V electrical system with 12-amp. 110V converter	■	■	Light in front trunk	■	■	U-shaped dinette in lieu of standard dinette (8 U)	■	■
17-gal. fresh water system with demand pump	■	■	Mud flaps		■	<b>Customer Value Package</b>	<b>Jay Series</b>	<b>Select</b>
Appliances are pre-plumbed for LP gas	■	■	One-piece high-density polyethylene wheel wells	■	■	2-cu.-ft., 3-way gas/electric refrigerator (110V/12V/LP)	■	■
Carry-out dinette table	■	■	Outside porch light with awning light adapter		■	AM/FM/CD stereo		■
Cutting board/sink cover (1)		■	Outside shower (all Jay Series except 806)	■	■	Battery gauge		■
Double-bowl white acrylic sink with high-rise faucet	■	■	Patio light with amber lens	■	■	Bunk storage shelf		■
Faucet		■	Polished aluminum wheels		■	Bunk-end fan lights (2)	■	■
Fluorescent light above sink		■	Prep for battery	■	■	Polished aluminum wheels		■
Microwave oven with carousel		■	Rear bumper made of 4" tubular steel		■	Prep for generator		■
Spice rack	■	■	Rubber truck-type fenders		■	Prep for solar power		■
Tray for silverware	■	■	Scratch resistant, embossed aluminum finish on exterior	■	■	Self-storing awning made by Jayco	■	■
White acrylic sink	■	■	Self-storing step	■	■	Water purification system	■	■
White enamel carryout oven (2-burner, depending on model)	■	■	Shock absorbers		■			
			Spare tire and tire carrier	■	■			
			Storage compartment in front trunk (select models)	■	■			
			Tent attachment velcros around entrance door	■	■			
			Vinyl, spare tire cover	■	■			
			Wide-body construction	■	■			



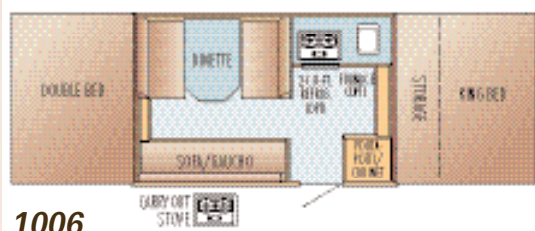
## 2005 Jay Series™ camping trailers



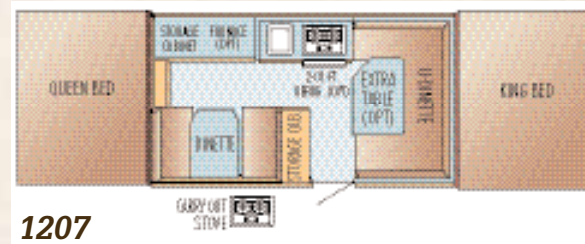
806



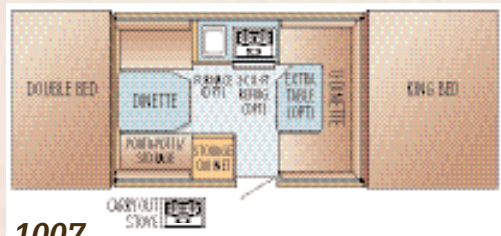
1206



1006



1207

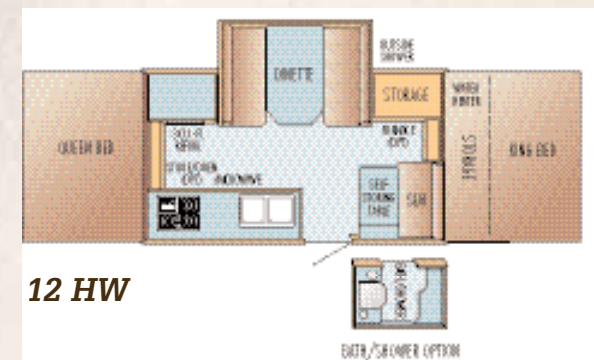


1007



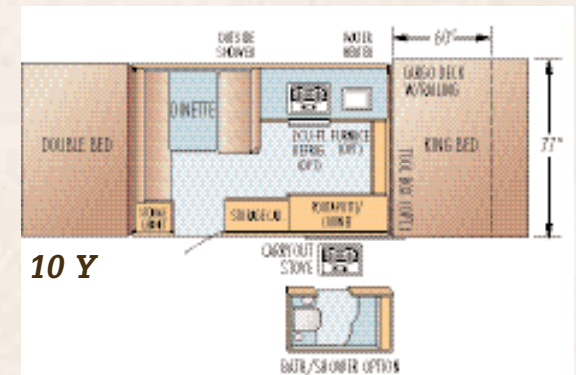
1407

## 2005 Select™ camping trailers

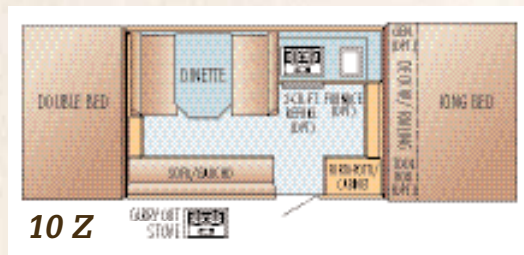


12 HW

## 2005 Baja™ camping trailers



10 Y



10 Z



# 2005 Camping trailer specifications

Jay Series™ Models	Travel Length	Campsite Length	Approx. Travel Height	Unloaded Vehicle Weight (w/std. equip.) (lbs.)	Approx. Hitch Weight (lbs.)	Gross Vehicle Weight Rating (lbs.)	Cargo Carrying Capacity (w/out options) (lbs.)	Fresh Water Capacity (gals.)	Sleeping Capacity
<b>806</b>	11'-10"	16'-3"	56"	1350	170	2000	650	17	6
<b>1006</b>	16'-8"	21'-6"	55"	1950	200	*2800	850	23	7
<b>1007</b>	14'-2"	20'-1"	56"	1680	180	2300	620	23	7
<b>1206</b>	18'-8"	24'	55"	2395	315	3150	755	23	7
<b>1207</b>	16'-2"	24'	56"	1885	195	2950	1065	23	7
<b>1407</b>	18'-8"	26'	57"	*2675	*280	*3330	*655	17	7
<b>Select™ Models</b>									
<b>12HW</b>	18'-10"	24'	64"	2570	250	3500	930	17	6
<b>Baja™ Models</b>									
<b>10Y</b>	18'-10"	20'-7"	67"	*1825	*225	*3500	*1675	17	6
<b>10Z</b>	16'-6"	20'-7"	67"	1825	225	3000	1175	17	7

\*Estimated

**Unloaded Vehicle Weight (UWV):** Sometimes referred to as "Dry Weight," UWV means the weight of this trailer as built at the factory. The UWV, as used in product literature and other promotional materials, does not include cargo, fresh water, LP gas, options or dealer-installed accessories.

**Gross Vehicle Weight Rating (GVWR):** GVWR means the maximum permissible weight of the trailer, including the UWV plus passengers, personal items, all cargo, fluids, options and dealer-installed accessories. The GVWR is equal to or greater than the sum of the UWV and the CCC.

**Cargo Carrying Capacity (CCC):** CCC means the maximum weight of all passengers, personal items, food, fresh water, LP gas, tools, other cargo and dealer-installed accessories\* that can be carried by the trailer. CCC is equal to or less than GVWR minus UWV.

\* The addition of options will decrease CCC.

It is important for your safety and enjoyment that your tow vehicle be adequately sized and equipped to tow and handle the GVWR of the RV you select. Review weights and rating of your tow vehicle and consult a competent advisor for

questions or advice. Whether you are new to RVing or a veteran, get a feel for the performance of your tow vehicle and the RV together before heading out on the roadways. **When you tow an RV, you must drive differently than you do when driving a single vehicle.** Practice hooking up, driving, backing up and braking in a safe environment or seek out professional instruction.

See specifications chart above. Jayco® affixes a weight label to each new RV which lists weight information for that vehicle.



The Jayco 2+3 Warranty is a manufacturer's limited warranty. It doesn't come from your dealer and it's not an extended warranty! It comes from the people who build Jayco recreational vehicles to the people who buy them. Each Jayco is warranted to the original purchaser for twenty-four (24) months from the date of purchase

## We back what we build

against defects in materials and workmanship. The Jayco warranty includes a three-year (3) structural guarantee. In addition, our limited warranty may be transferred one time within the first two (2) years. Go ahead and compare the Jayco warranty with other manufacturers' warranties. You'll find it's the best in the business! For a copy of the limited warranty with full terms and conditions, ask your local Jayco dealer or visit our Web site.



**Lifetime Coverage** On all camping trailers, Jayco offers to the original purchaser additional industry-leading lifetime parts and labor coverage on our lifter system, roof, floor and frame. We also offer five-year (5) coverage on our tent with parts, labor and freight covered the first two years; parts, factory labor and return freight during years three, four and five.



RVQ is a registered trademark of Vitco, Inc.  
TorFlex is a registered trademark of the Dexter Axle Company  
Camper-Tex is trademarked by Bruin Plastics Co., Inc.  
E-Z Lube is a registered trademark of the Dexter Axle Company  
Onan is a registered trademark of Cummins Engine Corporation  
Structurwood is a registered trademark of Weyerhaeuser Corporation



As a Jayco owner, you can be part of the Jayco Jafari International Travel Club. Ask your dealer about the Jafari "flight" in your area, write Jayco direct or visit our Web site.

**Please Note:** All information in this brochure is the latest available at the time of publication approval. Jayco reserves the right to make changes and to discontinue models without notice or obligation.

Pictures in this brochure may show optional equipment. RVs built for sale in Canada may differ to conform to Canadian codes.

Printed on recycled paper.



FAMILY OWNED. FAMILY FOCUSED.

Jayco, Inc. P.O. Box 460 Middlebury, IN 46540  
[www.jayco.com](http://www.jayco.com)

Jayco is a registered trademark of Jayco, Inc.

Part No. 0501000.2005

©2004 Jayco, Inc. 0704-100M Litho in U.S.A.

See dealer below for further information and prices.