

Legacy™

2009 Fifth Wheels by Jayco®



2009 Legacy Fifth Wheels by Jayco®



Jayco

AMERICA'S MOST LIVEABLE RVs.



LEGACY

Unbridled luxury. Unrivaled quality.

Introducing the 2009 Jayco Legacy—the new standard in recreational comfort, luxury and durability. High-end appointments and rugged construction put the Legacy fifth wheel in a class by itself: perfect for weekend adventures, week-long excursions and extended vacations. And because it's from Jayco, it also comes with the industry's best warranty. So, you can take the road less traveled and still stay in the lap of luxury.



36RLMS | TRUFFLE

LEGACY

The 2009 Legacy's intelligently designed floorplans are built for the individual or couple that desires space and luxury. With expansive slideouts, plenty of seating, spacious kitchens and luxurious bedrooms, the Legacy is perfect for entertaining or relaxing.

Built For Liveability

Durable Construction

Legacy fifth wheels are constructed with high quality materials using production techniques perfected over the past 40 years. The 4 1/2" arched aluminum truss roof rafters (R-29) ① combine with our welded tubular sidewall framing ② and double stacked steel frame ③ to give each Legacy a durable foundation that is backed by the best warranty in the industry.

Designed For Convenience

Many features on the Legacy are designed to make travel more enjoyable and liveable such as attractive easy-care carpet ④, high-quality carpet pads ⑤ and the Store Galore™ basement storage ⑥.

Built for Comfort

The Legacy boasts some of the best insulation values in the industry—combining bead-foam insulation ⑦, fiberglass insulation ⑧ and reflective foil insulation ⑨ in the sidewalls for an insulation value of R-17—along with a heated, galvanized and enclosed underbelly ⑩. The Legacy is built to keep you comfortable through hot and cold weather.



Luxury Defined

The Legacy is designed to offer luxurious standards and options such as a 15,000 BTU central air conditioning unit ⑪, MOR/ryde® suspension and pinbox ⑫, and an 8,000-lb. disc brake system with electric over hydraulic actuator ⑬.

Legacy™
2009 Fifth Wheels by Jayco®



36RLMS | TRUFFLE

One for the memories

Richly appointed and beautifully designed, the Legacy is built for liveability in every sense of the word. The luxurious living space features warm maple hardwood cabinetry and accents, a 42" LCD HDTV JVC stackable Home Theatre System with Dolby® 5.1 Surround Sound and a cozy fireplace for a relaxed, roomy and restful home away from home. Because as great as the outdoors can be, in a Legacy, the indoors are every bit as memorable.



The spacious Legacy kitchen designs are accented by rich Washington Glazed Maple hardwood cabinetry, the finest stainless steel appliances and high-gloss DuPont™ Corian® countertops.



A large radius shower with skylight combines with sleek nickel fixtures and rich woodwork to give the Legacy's bathroom a distinctive feel.



The Legacy bedroom is richly appointed with decorative pillows, a quilted bedspread and even a cedar-lined wardrobe.

A LEGACY OF CRAFTSMANSHIP

Jayco's dedicated production team includes Amish craftsmen who build with well-honed woodworking techniques passed down for generations and skilled seamstresses who produce our upholstery, bedding and draperies with great attention to detail.



Compare models and get the latest updates | www.jayco.com

STANDARDS AND OPTIONS

STANDARD BATHROOM EQUIPMENT

Ducted heating
Fiberglass radius shower
Genuine Congoleum™ no wax flooring
Nickel fixtures
Radius glass shower door
Residential medicine cabinet with mirror
Skylight with shade in tub/shower
Solid hardwood spindle corner accents on lavatory base
Thetford™ porcelain stool with foot pedal
Toilet paper holder
Towel holder
Wall switches for all lights
Window in commode area

STANDARD BEDROOM EQUIPMENT

Bed lifts up on easily on struts, with storage
Decorative mirrored headboard
Decorative pillows for bed
Dresser with built-in laundry hamper
Nightstands (with queen bed only)
Queen bed
Quilted bedspread with 2 pillow shams
Reading lights over bed
TV cabinet and overhead cabinet with storage and satellite and cable jacks

STANDARD CONSTRUCTION FEATURES

100" wide body
1-1/2" welded tubular-aluminum sidewall framework
4-1/2" arched aluminum truss roof (R-29)
5/8" tongue and groove plywood main floor decking
5-1/2" floor trusses
1/2" bead-foam insulation in sidewalls
Cabinetry crafted with screwed hardwood stile construction
Deluxe hidden cabinet hinges
Electric-powered slideout
Enclosed, insulated and heated underbelly (R-41)
Frame made of 10" double-stacked, tubular cambered steel
Frame prepped for bike rack/cargo tray option
Fully decked roof with 3/8" plywood
Gelcoat fiberglass sidewall exteriors
Glacier Thermo-Pak
Metal underbelly covering
One-piece, seamless rubber roof
Reflective foil insulation and residential insulation in sidewalls, front and rear (R-17)
Welded aluminum studs in floor, wall and roof on 16" centers

STANDARD EXTERIOR EQUIPMENT

12V hitch light
12V storage compartment lights
16" G range radial tires
8,000-lb. disc brake system with electric over hydraulic actuator
8-lug polished aluminum wheels
ABS fender skirts
Adjustable shackles
Basement storage with Tuff-ply™ flooring
Battery box for two batteries
Caps on front and rear made of fiberglass with radius corners
Electric-powered front jacks
Entrance door made of fiberglass and radius cornered with screen door
E-Z Lube® shackles
Foldable exterior grab handle
Front jacks with quick release pins
Gel-coat entry and baggage doors
LED exterior running lights
Lockable, insulated and radius-cornered baggage doors with heavy-duty grab handles
Nev-R-Lube™ axles
Outside shower
Painted steel wheel wells
Partial paint exterior graphics
Patio light with inside switch
Rain gutting molded with drip spouts
Roof ladder
Shock absorbers on all wheels
Sidewall corners radiused at top and bottom
Stor-Galore™ basement storage
Street-side utility light
Triple retractable entrance step

STANDARD HEAT, POWER AND WATER EQUIPMENT

110V G.F.C.I. protected exterior receptacle
12gal. gas/electric DSI auto-ignition water heater
12V demand water pump
12V electrical system with 110V, 80amp power converter
50amp electric service
50amp quick-connect power cord
A/C (Central), 15,000 BTU with quick cool feature, louvered directional ceiling vents
A/C chill grill
Battery disconnect switch
Dual 40lb. propane gas bottles, with regulator (in side compartment)
Furnace with wall thermostat and auto-ignition
Holding and fresh water tanks made with rotocast design
Hook-up for city water
In-floor ducted heat
Interior Command Center®
Monitor panel for all systems
Prep for second A/C
Prep for solar panel
Prep for washer/dryer
Uni-Dock™ utility center, heated and enclosed
Water heater bypass system
Water system winterization kit

STANDARD INTERIOR EQUIPMENT

Ball bearing drawer guides throughout
Cable TV hookup with RG6 coax cabling
Carpeting with plush 3/8" residential rebond carpet padding
Ceiling fan with light
Crank-up digital TV antenna with signal booster
Decorative nickel lighting throughout
Decorative throw pillows for hide-a-bed
Deluxe entertainment center
End table with built-in magazine rack
Genuine DuPont™ Stainmaster® carpeting in living room and bedroom
Halogen lighting under overhead cabinets
Hardwood cabinet stiles
Hardwood entrance door grab handle
Hardwood entrance door header
Hardwood fascia boards
Hide-a-bed sofa (air mattress)
High-intensity 12V lighting package
Linoleum floor in entryway
Overhead cabinetry in slideout room with raised panel doors
Padded vinyl ceiling throughout
Pleated day/night shades
Prep for satellite dish for roof and sidewall
Residential tack-strip carpet installation
Residential-style trim and molding
Rocker recliner(s)
SuperSlide™ with flush-floor design
Wardrobe lights
Work station/desk

STANDARD KITCHEN EQUIPMENT

10 cu.ft. refrigerator with stainless steel double doors
DuPont™ Corian® bi-fold, recessed cover for stove
DuPont™ Corian® sink covers (2)
Free-standing table with 4 chairs
Genuine Congoleum™ no wax flooring
Hardwood spindle corner accents on kitchen bases
High-rise single lever faucet with pull-out sprayer
Mini-blind
Recessed sealed 3-burner range with 9000BTU burners
Silverware drawer divided for utensils
Stainless steel convection microwave oven
Stainless steel sink
Toe kicks on all base kitchen cabinets
Trash can
Wallpaper border

STANDARD SAFETY EQUIPMENT

Breakaway switch
Carbon monoxide alarm
Fire extinguisher
Lock and dead bolt on entrance door
Multiple egress windows
Propane alarm
Smoke alarm
Tinted safety glass windows

SELECT PACKAGE

All-in-one home theater remote
Decorative light above entry door
Deluxe free-standing table with hidden storage and extended leaf
Frameless thermo-pane windows
Hardwood bedroom door with opaque glass inserts
Hardwood interior window trim
Hardwood step trim
High gloss polished DuPont™ Corian® countertops with bullnose style edging
JVC® home stereo system with stackable tuner, DVD and 5.1
Dolby® Digital
Jabot curtains throughout
Raised panel hardwood interior passage doors (bedroom & bath)
V-groove DuPont™ Corian® backsplash at range

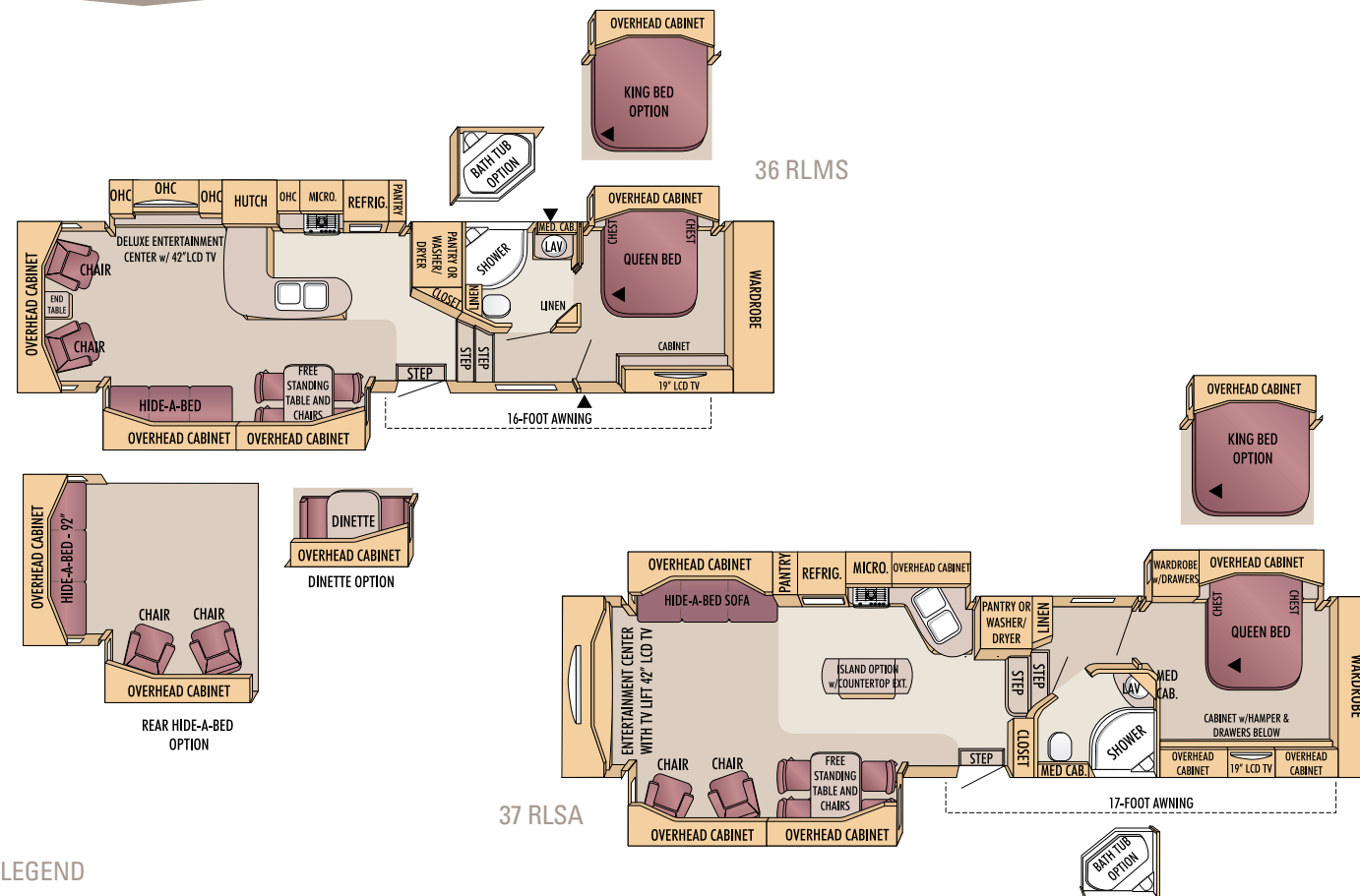
CUSTOMER VALUE PACKAGE

19" LCD HDTV in bedroom
42" LCD HDTV in living area
Aluminum rims
Carefree® Eclipse™ armored side awning with wind sensor
Central vacuum system
Decorative hardwood fascia boards
Deluxe pillow-top mattress
Dolby® Digital 5.1 Surround Sound system
DuPont™ Corian® kitchen and bath countertops
Electric rear stabilizer jacks (2)
Floor safe
Holding tank sprayer
MOR/ryde® suspension and pin box
Security lights (2)
Spare tire and carrier
Water purification system

OPTIONS

15,000-BTU A/C with Heat Pump in Living Room
22" Oven
2,800Watt Inverter with 4 Batteries
2nd 15,000BTU A/C
7,000Watt Generator
92" Sofa on Back Wall with Recliners in Slideout (XE)
Armored slideout awnings (3)
Audible backup camera system
Basement slideout storage tray (door side)
Bike Rack/Cargo Tray System
Burnished glazed maple hardwood cabinetry
CSA Standards
Customer Value Package
Fantastic Fan™ with rain sensor (kitchen)
Fiberglass garden tub ILO fiberglass shower
Fireplace
Generator prep
King bed
Kingdome® satellite dish
Leather recliners (2) ILO fabric recliners
Norcold® side-by-side refrigerator with ice maker
Satellite kit
Stackable Whirlpool® washer & dryer
Thermal pane windows
Washington glazed maple hardwood cabinetry

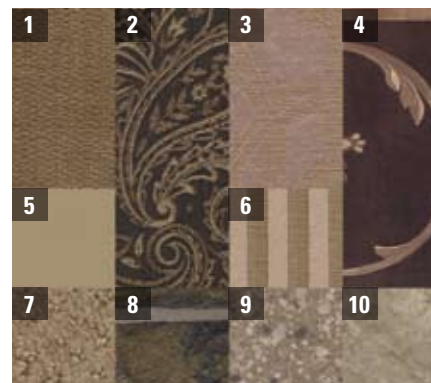
FLOORPLANS



LEGEND

▲ = Outside Storage Compartments LAV. = Bathroom Sink MICRO. = Microwave
OHC. = Overhead Cabinets REFRIG. = Refrigerator WARD. = Wardrobe

COLOR OPTIONS



Espresso



Truffle



Cabernet

1. Chair Upholstery 2. Main Upholstery 3. Bedspread 4. Wallpaper 5. Optional Chair 6. Drapery 7. Carpet 8. Vinyl Floor 9. Countertop 10. Accent Panel 11. 2-Tone Sofa

SPECIFICATIONS		Exterior Height	Bedroom Interior Height	Unloaded Vehicle Weight	Dry Hitch Weight	Gross Vehicle Weight Rating	Cargo Carrying Capacity	Fresh Water Capacity	Gray Waste Water Capacity	Toilet/Black Wastewater Capacity
	Floorplan	Length	(with A/C)	(lbs.)	(lbs.)	(lbs.)	(lbs.)	(gal.)	(gal.)	(gal.)
Legacy	36 RLMS	38' 4"	161"	TBD	TBD	17,500	TBD	112	80	58
	37 RLSA	TBD	TBD	TBD	TBD	TBD	TBD	TBD	TBD	TBD

It is important for your safety and enjoyment that your tow vehicle be adequately sized and equipped to tow and handle the GVWR of the RV you select. Review weights and rating of your tow vehicle and consult a competent advisor for questions or advice. Whether you are new to RVing or a veteran, get a feel for the performance of your tow vehicle and the RV together before heading out on the roadways. When you tow an RV, you must drive differently than you do when driving a single vehicle. Practice hooking up, driving, backing up and braking in a safe environment or seek out professional instruction. Jayco affixes a weight label to each RV which lists weight information for that vehicle. See specification chart above.

Unloaded Vehicle Weight (UUVW): Sometimes referred to as "Dry Weight," UUVW means the typical weight of this trailer as built at the factory. The UUVW, as used in product literature and other promotional materials, does not include cargo, fresh water, propane, options or dealer-installed accessories.

Gross Vehicle Weight Rating (GVWR): GVWR means the maximum permissible weight of the trailer, including the UUVW plus passengers, personal items, all cargo, fluids, options, and dealer-installed accessories. The GVWR is equal to or greater than the sum of the UUVW and the CCC.

Cargo Carrying Capacity (CCC): CCC means the maximum weight of all passengers, personal items, food, fresh water, propane, tools, other cargo and dealer-installed accessories that can be carried by the trailer. CCC is equal to or less than GVWR minus UUVW. The addition of options will decrease the CCC.

Hitch Weight (HW): The hitch weight, as used in product literature and other promotional materials, does not include cargo, fresh water, propane gas, options or dealer-installed accessories. The addition of these types of items will either add to or subtract from the stated hitch weight.



AMERICA'S MOST **LIVEABLE** RVs.

IT'S ALWAYS BEEN ABOUT "LIVEABILITY"

Lloyd Bontrager went into the RV manufacturing business in 1968 to improve the camping trailer lifter system. He knew that a better lifter system would mean a more "liveable" camping experience for his family and so many others.

More than forty years later, and now the largest family-owned RV manufacturer in the world, this priority still rings true at Jayco. As we work to continue building "America's Most Liveable RVs", we do it with one goal in mind—to improve the RV experience and help make "family time" truly memorable.



We Back What We Build

The Jayco Co-Pilot Warranty is a manufacturer's limited warranty. It comes from the people who build Jayco recreation vehicles to the people who buy them. Each Jayco is warranted to the original purchaser for twenty-four (24) months or twenty-four thousand (24,000) miles (mileage limitation applies to motorized products only), whichever occurs first, from the original date of purchase against defects in materials and workmanship. Jayco's limited warranty is not transferable. Go ahead and compare the Jayco warranty with other manufacturers' warranties. You'll find it's the best in the business!

For a copy of the limited warranty with full terms and conditions, ask your local Jayco dealer.



Why a Local Jayco Dealer is Important to You

Establishing a solid relationship with your local Jayco dealer is a key component in the enjoyment of your new Jayco. By purchasing from a local dealer, you will have a convenient location for sales, parts and service support.

Jayco dealers are required to deliver all products at the site of the sale to ensure a full product orientation and walkthrough at the time of delivery. It's a good way to become familiar with your Jayco and to meet the service, parts and warranty staff members who will be assisting you. If you live in Canada, there are regulations that must be met when buying a Jayco RV. Your local Canadian dealer is a professional at meeting these requirements and regulations. There simply is no substitute for a good relationship with your local Jayco dealer.

Your Jayco Dealer

Customer First Roadside Assistance

Travel worry-free in your Legacy™ with Jayco's Customer First Roadside Assistance program, yours at no cost during your first year of ownership. This program is offered through Coach-Net®, the largest RV emergency road service in the country, and gives you immediate access to dependable roadside assistance and support services with a simple phone call.

- **Free** jump starts
- **Free** tire changes
- **Free** fuel delivery
- **Free** lockout service
- **Free** travelers checks
- Toll-free nationwide service appointment assistance
- 24-hour toll-free emergency message service
- **Free** custom trip routing and full color map service
- **Free** dispatch of on-site mechanical service
- \$2,000 trip interruption reimbursement



Jayco proudly sponsors Tread Lightly!®, a nonprofit organization whose mission is to empower generations to enjoy the outdoors responsibly through education and restoration.



From RV insurance to extended warranties, JayPlus has it covered. Ask your Jayco dealer about our exclusive JayPlus program today.



As a Jayco owner, you can be part of the Jayco Jafari International Travel Club. Ask your dealer about the Jafari "flight" in your area, write Jayco or visit our website.

Jayco, Inc., P.O. Box 460, Middlebury, IN 46540, www.jayco.com 

See dealer for further information and prices. All information in this brochure is the latest available at the time of publication approval. Jayco reserves the right to make changes and to discontinue models without notice or obligation. Photos in this brochure may show optional equipment and props for photography purposes. RVs built for sale in Canada may differ to conform to Canadian codes. E-Z Lube is a registered trademark of the Dexter Axle Company. Carefree is a registered trademark of Carefree of Colorado. Dolby and the double-D symbol are registered trademarks of Dolby Laboratories. ©2009 Jayco, Inc. 09-LGCV-PL 1008-20K Printed in U.S.A.