

2004 Jay Feather® Ultra Lite Weight Travel Trailers by Jayco®

Ultra lightweight towing for ultra-fun family adventures.



You can enjoy the best of both worlds.



Call everyone in for dinner using the optional family two-way radio system equipped with four hand-held radios and holder/charger.

Optional KidStuf™ bunk organizers give kids a place for their toys, books and other items.

Deep-quilted bunk cushions provide extra comfort.

Attractive, matching bunk privacy curtains give you a little time to yourself.



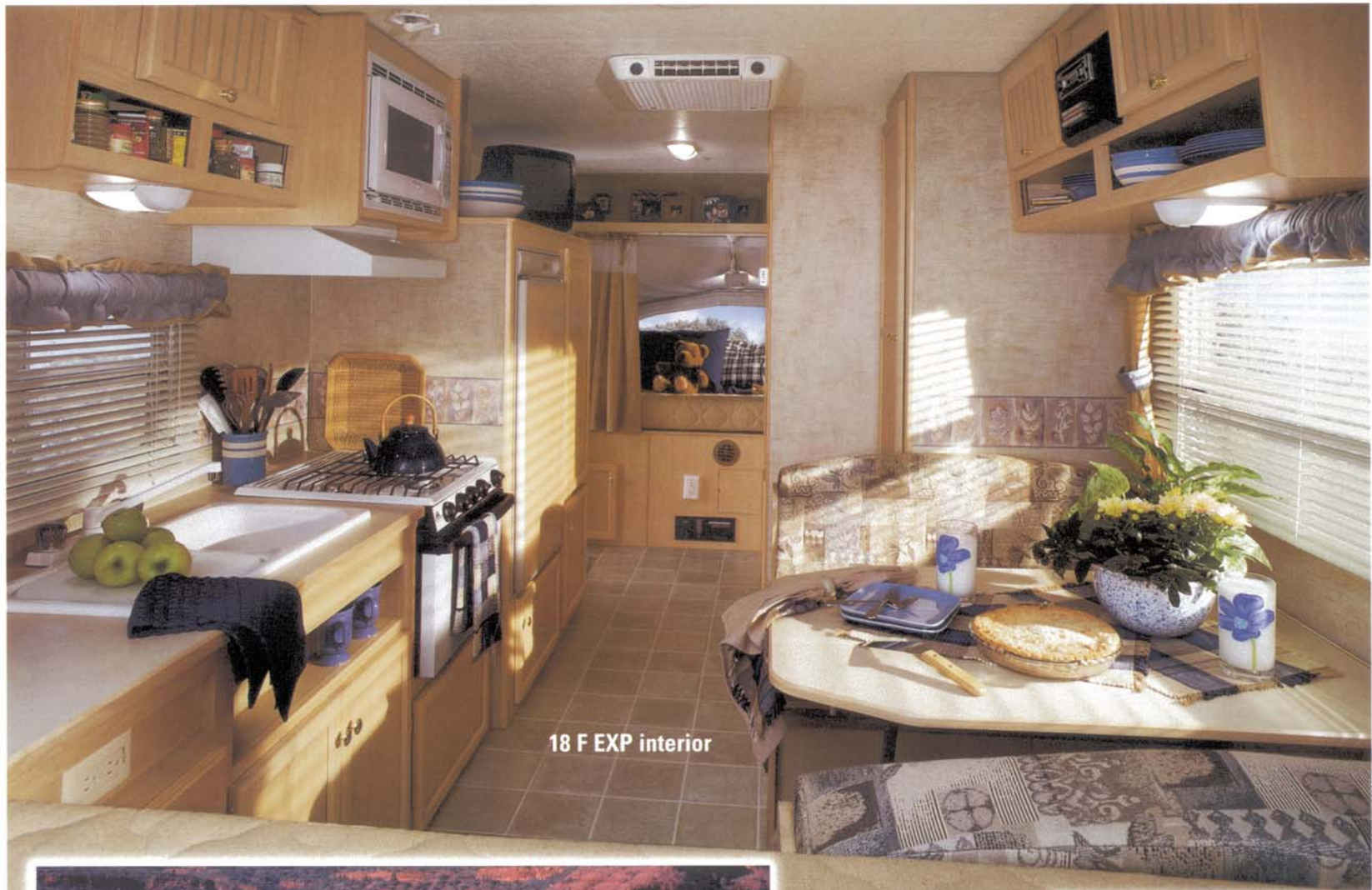
Nothing beats the taste of food grilled outdoors. Our optional portable gas barbecue grill easily mounts on the outside of the trailer when you want to use it and comes with a handy carrying case.

Store plenty of food in the large pantry.

Rolling hills and twisting turns lead to your destination ... a serene spot where you can unwind and get away from the phones and the traffic and the noise. Ultra lite weight Jay Feather® EXP hybrid travel trailer gets you there by giving you the comfortable features of a travel trailer and the ease of towing a camping trailer. Hitch it to your SUV or minivan and you're ready to leave the world of worries and enter the world of wonders.



The kitchen features a full double, white acrylic sink and cabinets with Westview maple doors, traditional, strong mortise-and-tenon joints and screwed stile construction.



18 F EXP interior



Jay Feather® EXP feels like a travel trailer but tows like a camping trailer with standard C-Range tires, independent torsion-axle suspension and electric brakes.

Your music goes anywhere with the optional AM/FM/CD stereo.



Sometimes going back to nature is the only way to leave everything behind.

Clever construction techniques make ultra lite weight Jay Feather® LGT travel trailers 10% to 15% lighter than conventional travel trailers of similar length, so they're easier to tow. Jayco® has perfected this design, giving you 78" of interior headroom and more pass-through storage models than competitors' units.



Don't limit your choice of clothes. Get plenty of space in closet wardrobes, including the bathroom wardrobe (some models).

Store loads of stuff under the bed, shown here with the optional innerspring mattress that lifts easily on struts.

Jay Feather LGT gives you a walk-around queen bed (N/A 19 W), quilted bedspread, mini blinds and ample storage in overhead cabinets.



Get consistent-tasting drinking water with the optional water purifier.

No need for your old camp stove. Cook on the 3-burner range top or optional oven. The range hood has a light and exhaust fan. The microwave with carousel is another time-saving option.

Keep track of the status of all systems with the monitor panel.





Pack longer items in the front pass-through storage compartment, which gives more room than competitors' front storage.

Reach stored items easily in the optional front storage compartment pull-out tray.

Gain more floor space with the J-Steel™ sofa slideout (select models). The optional electric power slideout makes it easy to operate.

The bathroom gives you everything you need, such as a medicine cabinet with mirror, 12V vent fan and optional skylight and tub surround.



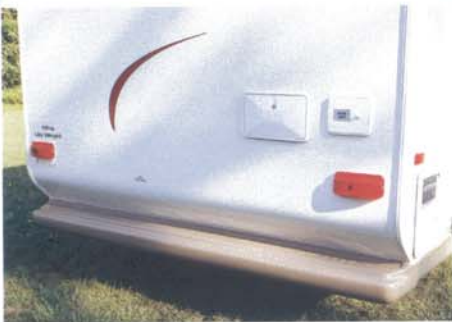
26 S LGT interior

See why Jayco® makes the great outdoors so great.



Fender skirts are made from tough ABS composite material to resist stone damage and improve aerodynamics. Add optional chrome wheels for an attractive touch.

Clean off at the optional outside shower featuring hot and cold faucets, rugged ABS plastic hose and shower head.



Simply plug in the optional outside stove for an outdoor dinner. Jay Feather® LGT's lightweight design, smooth aerodynamics and independent torsion-axle suspension system make it easy to tow. The A-frame-mounted spare tire, including speed drop-down mechanism, is easy to use in a pinch.

The molded ABS rear bumper cover creates a smooth, attractive surface.

The double ABS gas bottle cover protects and gives easy access.

Party on the patio with the optional outside entertainment center, equipped with a spare 110V duplex power outlet and a heavy, waterproof locking cover.

How tough is Jay Feather®?

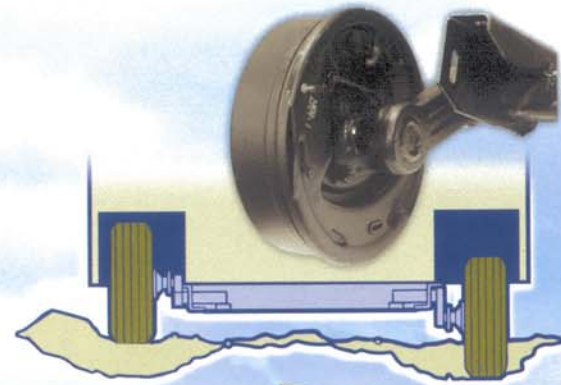
At the punishing Bosch Automotive Proving Grounds Durability Test Track, after accelerated cycle testing equivalent to 35,000 miles of hard road use, the 4X4 tow vehicle suffered substantial damage. Jay Feather? Only a broken brake light filament.

Frame is 10%-15% lighter than the frame of conventional travel trailers.

E-Coat™ automotive, electronic paint process inhibits rust. Independently tested to withstand salt spray.

Aerodynamic design, lighter weight and standard enclosed underbelly (LGT) make towing easier and more efficient.

Tapered rail design strategically places the strongest part of the frame over the axles.



TorFlex® independent torsion-axle suspension gives more ground clearance, provides a smooth ride, makes towing easier and reduces wear and tear by absorbing bumps.



Modular frame design features "huck" bolt assembly instead of welding. Allows better fit and easier service.

Interlocking dimples in each joint control and secure joint positioning.

Significantly stiffer steel (high strength low alloy) is more rigid than the commercial quality steel used in most conventional trailers.

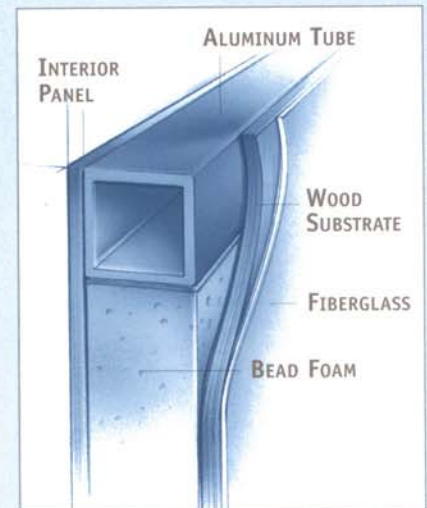
TuffShell™ construction uses vacuum-bond laminated walls, roof and floor for smoother-looking, more durable walls than typical pinch-roller construction.



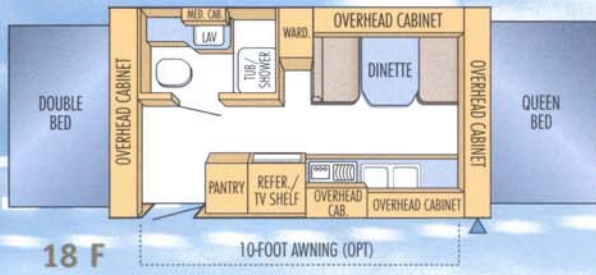
The one-piece PolyFlex™ underfloor covering makes towing easier by improving aerodynamics, and protects against road debris (enclosed underbelly on Jay Feather LGT).



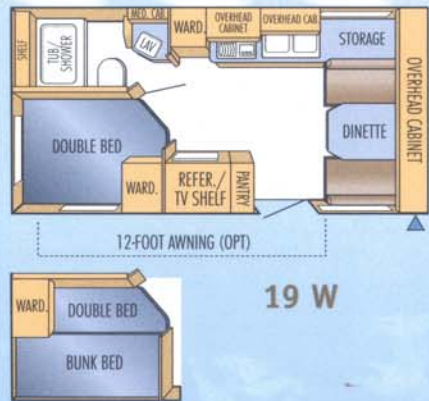
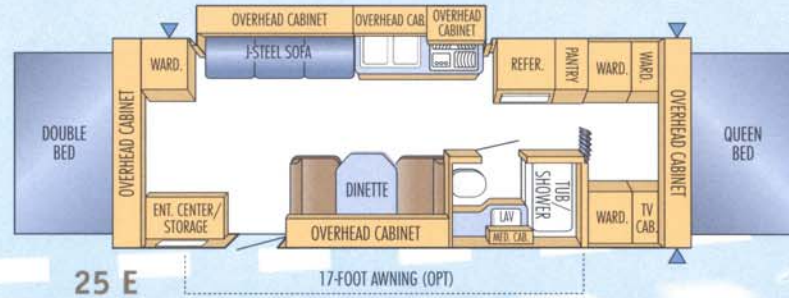
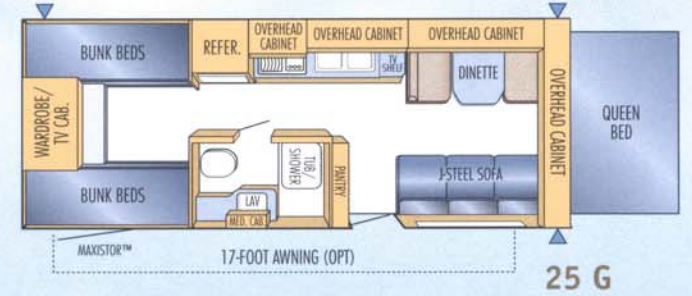
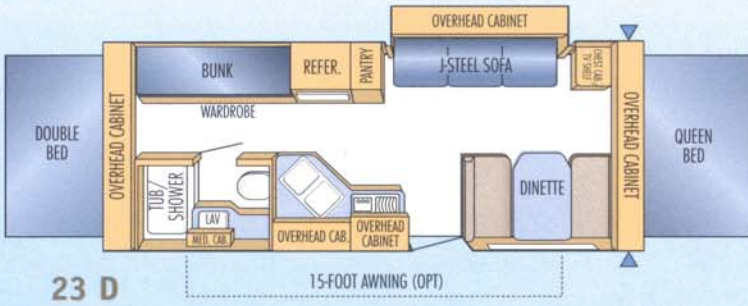
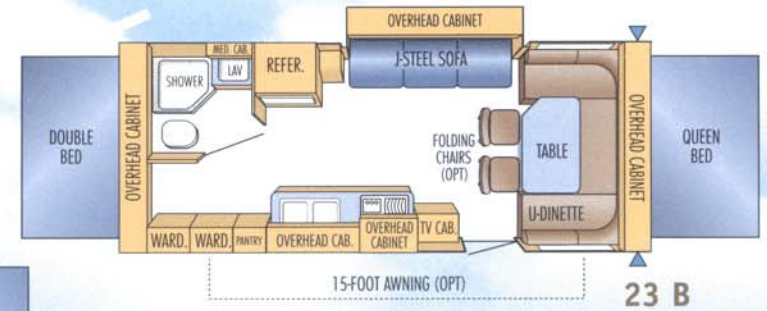
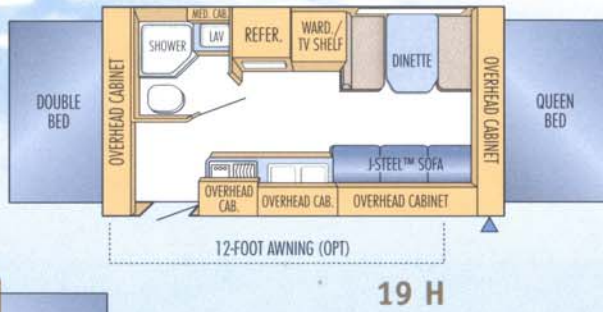
E-Z Lube® axles with removable caps make maintenance simple.



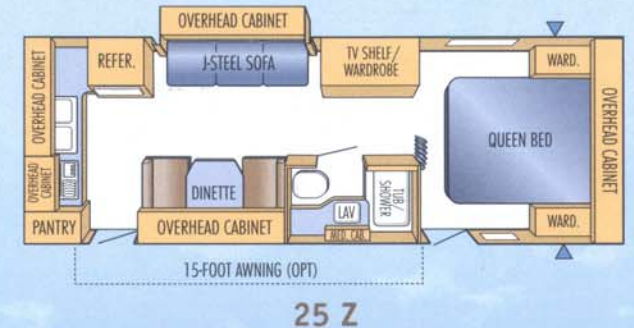
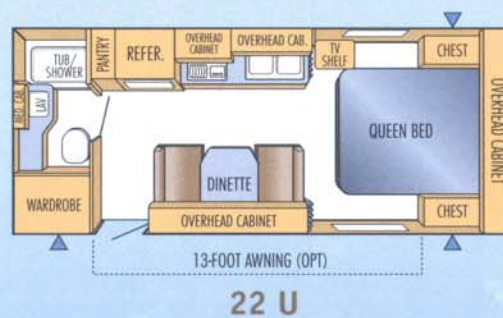
2004 Jay Feather® EXP Travel Trailer Floorplans



OUTSIDE STORAGE COMPARTMENT

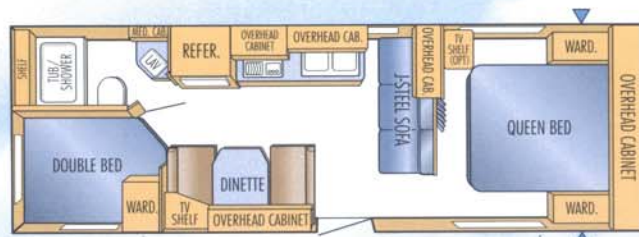


2004 Jay Feather® LGT Travel Trailer Floorplans

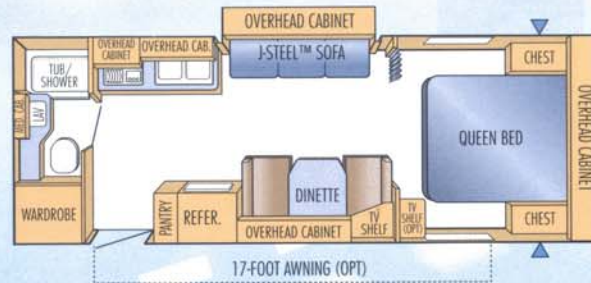
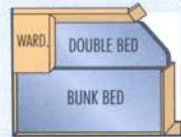


BUNK OVER DOUBLE BED OPTION

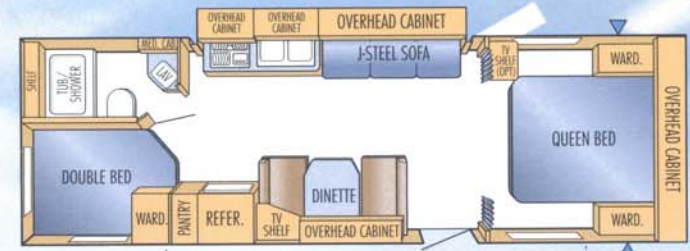
2004 Jay Feather® LGT Travel Trailer Floorplans – Continued



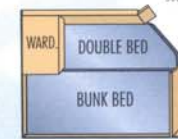
27 P



26 S



29 Y



2004 Jay Feather® Ultra Lite Weight Travel Trailer Specifications

EXP Models	Exterior Travel Length	Exterior Campsite Length	Exterior Width	Exterior Height w/opt AC	Interior Headroom	Unloaded Vehicle Weight (lbs.)	Hitch Weight (lbs.)	Gross Vehicle Weight Rating (lbs.)	Cargo Carrying Capacity (lbs.)	Fresh Water Capacity [^] (gals.)	Gray Water Capacity (gals.)	Toilet/Black Wastewater Capacity (gals.)
18 F	18'-2"	21'-6"	8'	115"	78"	2735	395	3750	1015	30	22	22
19 H	20'-2"	23'-1"	8'	115"	78"	N/A	N/A	N/A	N/A	30	22	22
23 B	23'-7"	27'-1"	8'	115"	78"	3725	340	4950	1225	30	29	22
23 D	23'-6"	27'-1"	8'	115"	78"	3740	495	4950	1210	30	29	22
25 E	26'-3"	29'-4"	8'	115"	78"	4125	560	5800	1675	30	29	22
25 G	26'-3"	26'-1"	8'	115"	78"	N/A	N/A	N/A	N/A	30	22	22
LGT Models	Exterior Travel Length	Exterior Width	Exterior Height w/opt AC	Interior Headroom	Unloaded Vehicle Weight (lbs.)	Hitch Weight (lbs.)	Gross Vehicle Weight Rating (lbs.)	Cargo Carrying Capacity (lbs.)	Fresh Water Capacity [^] (gals.)	Gray Water Capacity (gals.)	Toilet/Black Wastewater Capacity (gals.)	
19 W	20'-4"	8'	117"	78"	3130	485	4550	1420	36	30	22	
22 U	23'-6"	8'	117"	78"	3445	320	4950	1505	36	30	22	
25 Z	27'-6"	8'	119"	78"	N/A	N/A	N/A	N/A	36	30	22	
26 S	27'-6"	8'	119"	78"	4110	475	5800	1690	30	30	22	
27 P	29'-5"	8'	119"	78"	N/A	N/A	N/A	N/A	36	30	22	
29 Y	30'-11"	8'	119"	78"	4855	530	6500	1645	36	30	22	

[^] Includes water heater

Unloaded Vehicle Weight (UVW): Sometimes referred to as "Dry Weight," UVW means the typical weight of this trailer as built at the factory. The UVW, as used in product literature and other promotional materials, does not include cargo, fresh water, LP gas, options or dealer-installed accessories.

Gross Vehicle Weight Rating (GVWR): GVWR means the maximum permissible weight of the trailer, including the UVW plus passengers, personal items, all cargo, fluids, options and dealer-installed accessories. The GVWR is equal to or greater than the sum of the UVW and the CCC.

Cargo Carrying Capacity (CCC): CCC means the maximum weight of all passengers, personal items, food, fresh water, LP gas, tools, other cargo and dealer-installed accessories* that can be carried by the trailer. CCC is equal to or less than GVWR minus UVW.

*The addition of options will decrease the CCC.

It is important for your safety and enjoyment that your tow vehicle be adequately sized and equipped to tow and handle the GVWR of the RV you select. Review weights and rating of your tow vehicle and consult a competent advisor for questions or advice. Whether you are new to RVing or a

veteran, get a feel for the performance of your tow vehicle and the RV together before heading out on the roadways. **When you tow an RV, you must drive differently than you do when driving a single vehicle.** Practice hooking up, driving, backing up and braking in a safe environment or seek out professional instruction.

See specification chart above. Jayco® affixes a weight label to each new RV which lists weight information for that vehicle.

2004 Jay Feather® Ultra Lite Weight Travel Trailer Standards and Options



STANDARD INTERIOR FEATURES

JAY FEATHER® EXP JAY FEATHER® LGT

Feature	JAY FEATHER® EXP	JAY FEATHER® LGT
* Westview maple doors, mortise-and-tenon construction	■	■
Cabinets crafted with screwed stile construction	■	■
No-wax vinyl flooring throughout	■	■
3-burner range top	■	■
Prewired for microwave oven installation	■	■
Flush-mount refrigerator	■	■
Range hood w/light and fan	■	■
Shower curtain	■	■
Large drawer in U-dinette (23 B)	■	■
Large kitchen window	■	■
Slanted overhead cabinets (where possible)	■	■
Bunk lights with fan (2)	■	■
* Deep-quilted bunk cushions	■	■
Medicine cabinet w/mirror in bath	■	■
12V bathroom roof vent	■	■
Fire extinguisher	■	■
LP leak detector	■	■
Smoke detector	■	■
White acrylic double kitchen sink	■	■
High-rise white kitchen faucet	■	■
Wallpaper border - kitchen and dinette	■	■
Roof vent in bedroom	■	■
Prop for bed lid	■	■
Mini blinds	■	■
Sink cover - 1	■	■
78" ceiling height	■	■
Stereo prep w/2 speakers	■	■

STANDARD HEAT, POWER & WATER

JAY FEATHER® EXP JAY FEATHER® LGT

Feature	JAY FEATHER® EXP	JAY FEATHER® LGT
Double 20-lb. LP bottles with auto regulator (all EXP & 19 W, 22 U LGT)	■	■
Double 30-lb. LP bottles with auto regulator (25 Z, 26 S, 27 P, 29 Y)	■	■
45-amp. high-efficiency electronic converter	■	■
30-amp. power cord	■	■
Auto-ignition furnace w/thermostat	■	■
Ducted heat	■	■
Floor-ducted heat	■	■
Prewired for A/C	■	■
12V demand water pump	■	■
Copper gas lines	■	■
Monitor panel	■	■
120V power center	■	■
120V G.F.C.I. protected circuit	■	■
TV antenna and cable	■	■
Water heater bypass kit	■	■
6-gallon gas water heater	■	■
City water hook-up	■	■
Gravity water fill	■	■

STANDARD EXTERIOR FEATURES

JAY FEATHER® EXP JAY FEATHER® LGT

Feature	JAY FEATHER® EXP	JAY FEATHER® LGT
Independent torsion-axle suspension system	■	■
Radius-cornered entrance door with dead bolt lock	■	■
White frame radius-cornered baggage doors	■	■
Sewer hose storage compartment	■	■
Patio light w/inside switch and amber lens	■	■
110V exterior receptacle	■	■
Heavy-duty retractable entrance step	■	■
Safety chains and breakaway switch	■	■
Radial tires	■	■
10" electric brakes	■	■
Stabilizer jacks (4)	■	■
Camper-Tex™ water-repellent vinyl tent	■	■
2" hitch coupler (18 F)	■	■
2-5/16" hitch coupler	■	■
Lockable end bunks	■	■
TPO roof	■	■
Radius-framed white windows	■	■
Flush-mount front window & stone guard	■	■
White spoked wheels	■	■
Pass-through storage	■	■
Baggage doors with grab handles	■	■
HDPE wheel wells	■	■
E-Z Lube® axles	■	■
Spare tire w/carrier	■	■
* Painted bottom radius skirting	■	■
* Molded ABS bumper cover	■	■
* Composite bumper extensions	■	■
* ABS fenderskirts	■	■
* Double ABS gas bottle cover	■	■

STANDARD CONSTRUCTION FEATURES

JAY FEATHER® EXP JAY FEATHER® LGT

Feature	JAY FEATHER® EXP	JAY FEATHER® LGT
TuffShell™ vacuum-bond laminated walls, roof and floor	■	■
Tubular-aluminum frame	■	■
Bead-foam insulation throughout (R-7 roof/floor) (R-5 walls)	■	■
Smooth, one-piece fiberglass exterior	■	■
Unitized, 1-1/2" laminated floor construction	■	■
One-piece PolyFlex™ underfloor covering	■	■
Weld-free modular HSLA steel E-Coat™ frame	■	■
Enclosed underbelly	■	■

* New for 2004

OPTIONAL FEATURES

JAY FEATHER® EXP JAY FEATHER® LGT

Feature	JAY FEATHER® EXP	JAY FEATHER® LGT
Folding chairs (23 B)	■	■
Tinted safety glass windows	■	■
Bath skylight (18 F, 23 D, 25 E, 25 G) (25 Z)	■	■
20-lb. double ABS gas bottle cover	■	■
13,500-BTU A/C (all EXP & 19 W, 22 U LGT)	■	■
13,500-BTU Central A/C (25 Z, 26 S, 27 P, 29 Y)	■	■
15,000-BTU Central A/C (25 Z, 26 S, 27 P, 29 Y)	■	■
Microwave oven w/carousel	■	■
Oven	■	■
Outside stove	■	■
Portable gas barbecue grill w/carrying case	■	■
Awning	■	■
Stereo AM/FM cassette	■	■
Stereo AM/FM CD	■	■
Spare tire w/carrier	■	■
Hydraulic surge brakes (18 F)	■	■
Bunk over double bed (19 W, 27 P, 29 Y)	■	■
Outside shower	■	■
Exterior entertainment center	■	■
* 6-gallon gas/electric DSI water heater	■	■
Center tension rafter	■	■
Exterior storage drawer (22 U, 25 Z, 26 S, 27 P, 29 Y)	■	■
Stabilizer jacks - 4	■	■
Bedroom carpet (N/A 19 W)	■	■
KidStuf™ bunk organizer(s)	■	■
Innerspring mattress with bed struts	■	■
Bedroom TV shelf (N/A 19 W, 25 Z)	■	■
Bi-fold door (N/A 19 W)	■	■
Chrome wheels	■	■
5-cu.-ft. flush-mount refrigerator (18 F)	■	■
6-cu.-ft. flush-mount refrigerator (19 H, 23 B, 23 D, 25 E, 25 G) (22 U)	■	■
Family 2-way radio system	■	■
Water purifier	■	■
Electric power slideout (select models)	■	■
* ABS tub surround	■	■



2004 Jay Feather® Ultra Lite Weight Travel Trailer Interior Color Selections

APPLE
PIE



BLUEBERRY
BUCKLE



The Jayco® **2+3 warranty** is a manufacturer's warranty. It doesn't come from your dealer, and it's not an extended warranty! It comes from the people who build Jayco recreational vehicles to the people who buy them. Each Jayco is warranted to the original purchaser for twenty-four (24) months from the date of purchase against defects in materials and workmanship. This is full hitch-to-bumper coverage on towables and bumper-to-bumper on motorized RVs. The Jayco warranty includes a three-year (3)

WE BACK WHAT WE BUILD

structural guarantee. In addition, our warranty is transferable within the first two (2) years for a \$100 processing fee. Go ahead and compare the Jayco warranty with other manufacturers' warranties. You'll find it's the best in the business! For a copy of the warranty with full terms and conditions, ask your local Jayco dealer or visit our Web site.



We also offer **five-year (5) coverage** on our tent with parts, labor and freight covered the first two years; parts, factory labor and return freight during years three, four and five.

In the heart of the Midwest, old-world craftsmen have handed down tried-and-true construction methods from generation to generation. At our headquarters in Middlebury, Indiana, Jayco continues this tradition when building all of our recreational vehicles. Our rugged designs, solid construction and commitment to quality add up to a well-built vehicle you can depend on for years.



Tow Ratings

The following tow ratings are the highest available for the respective 2003 model year vehicles shown. Certain optional equipment may be required and other restrictions may apply. Consult the latest manufacturer's towing guide (available at your automotive dealership) or your vehicle owner's manual to verify the tow ratings provided. This information repurposed with permission from Trailer Life. Copyright 2003, TL Enterprises, Inc., 2575 Vista Del Mar Drive, Ventura, CA 93001.

VEHICLE	ENGINE	MAX TOW LIMIT (LBS.)
ACURA		
MDX	3.5L V-6	4500
RL	3.5L V-6	2000
BMW		
X5	3.0L I-6	6000
X5	4.4L/4.6L V-8	6000
BUICK		
Rendezvous	3.4L V-6	3500
CADILLAC		
Escalade	5.3L V-8	7300
Escalade	6.0L V-8	7800
CHEVROLET/GMC		
Astro/Safari	4.3L V-6	5800
Avalanche 1500	5.3L V-8	8200
Avalanche 2500	8.1L V-8	12000
Blazer/Jimmy	4.3L V-6	5700
Blazer Xtreme	4.3L V-6	2000
Blazer ZR2	4.3L V-6	4700
Suburban/Yukon XL 1500	5.3L V-8	8400
Suburban/Yukon XL 2500	6.0L V-8	9900
Suburban/Yukon XL 2500	8.1L V-8	12000
Tahoe/Yukon 1500	4.8L V-8	7400
Tahoe/Yukon 1500	5.3L V-8	7700
Trailblazer/Envoy	4.2L I-6	6300
Trailblazer EXT/Envoy XL	4.2L I-6	5900
Trailblazer EXT/Envoy XL	5.3L V-8	7200
Venture	3.4L V-6	3500
Yukon Denali 1500	6.0L V-8	8000
Yukon XL Denali 1500	6.0L V-8	7800
DAIMLER/CHRYSLER		
Dodge Caravan	3.3L/3.8L V-6	3800
Dodge Durango	4.7L V-8	5950
Dodge Durango	5.9L V-8	7550
Town & Country	3.3L/3.8L V-6	3800
Voyager	3.3L V-6	2000

VEHICLE	ENGINE	MAX TOW LIMIT (LBS.)
FORD		
Escape	3.0L V-6	3500
Excursion	5.4L V-8	7600
Excursion	6.0L TD/6.8L V-10	11000
Expedition	4.6L V-8	6050
Expedition	5.4L V-8	8900
Explorer	4.0L V-6	5800
Explorer	4.6L V-8	7160
Explorer Sport	4.0L V-6	5000
Explorer Sport Trac	4.0L V-6	5260
Windstar	3.8L V-6	3500
HONDA		
Odyssey	V-6 24-valve	3500
Pilot	3.5L V-6	3500
HUMMER		
H1	6.5L TD	8050
H2	6.0L V-8	6700
HYUNDAI		
Sante Fe	2.7L V-6	2700
INFINITY		
QX4	3.5L V-6	5000
ISUZU		
Ascender	4.2L I-6	5300
Ascender	5.3L V-8	7000
Axiom	3.5L V-6	4500
Rodeo/Rodeo Sport	2.2L	2500
Rodeo/Rodeo Sport	3.2L V-6	4500
JEEP		
Grand Cherokee	4.0L I-6	5000
Grand Cherokee	4.7L V-8	6500
Liberty	2.4L I-4	2000
Liberty	3.7L V-6	5000
Wrangler	2.5L I-4/4.0L I-6	2000
KIA		
Sedona	3.5L V-6	3500
Sorento	3.5L V-6	3500
LAND ROVER		
Discovery	All	5500
Freelander	2.5L V-6	2500
Range Rover	4.4L V-8	7700
LEXUS		
GX 470	4.7L V-8	5000
LX 470	4.7L V-8	5000
RX 300	3.0L V-6	5000

VEHICLE	ENGINE	MAX TOW LIMIT (LBS.)
LINCOLN		
Aviator	4.6L V-8	7300
Navigator	5.4L V-8	8500
MAZDA		
Tribute	3.0L V-6	3500
MERCEDES-BENZ		
G500	5.0L V-8	7000
G55AMG	5.5L V-8	7000
ML320	3.2L V-6	5000
ML500	5.0L V-8	5000
ML55AMG	5.5L V-8	5000
MERCURY		
Mountaineer	4.0L V-6	5680
Mountaineer	4.6L V-8	7040
MITSUBISHI		
Montero	All	5000
NISSAN		
Murano	3.5L V-6	TBD
Pathfinder	3.5L V-6	5000
Xterra	I-4/3.3L V-6 SC	3500
Xterra	3.3L V-6	5000
OLDSMOBILE		
Bravada	4.2L I-6	6300
Silhouette	3.4L V-6	3500
PONTIAC		
Aztek	3.4L V-6	3500
Montana	3.4L V-6	3500
PORSCHE		
Cayenne	4.5L V-8	7700
SATURN		
VUE	3.0L V-6	2500
SUBARU		
Baja	2.5L Flat 4	2400
Legacy/Outback/Forester	2.5L Flat 4	2000
TOYOTA		
4Runner	3.4L V-6	5000
Land Cruiser	4.7L V-8	6500
Sequoia	4.7L V-8	6500
Sienna	3.0L V-6	3500
Highlander	3.0L V-6	3500
VOLKSWAGEN		
Eurovan	2.8L V-6	4400
VOLVO		
XC90	2.5L I-5/2.9L I-6	5000

See dealer for further information and prices.



FAMILY OWNED. FAMILY FOCUSED.

Jayco, Inc. P.O. Box 460 Middlebury, IN 46540
www.jayco.com

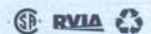


As a Jayco owner, you can be part of the Jayco Jafari International Travel Club. Ask your dealer about the Jafari "flight" in your area, write Jayco direct or visit our Web site.

Please Note: All information in this brochure is the latest available at the time of publication approval. Jayco reserves the right to make changes and to discontinue models without notice or obligation.

Pictures in this brochure may show optional equipment. RVs built for sale in Canada may differ to conform to Canadian codes.

Printed on recycled paper.



©2003 Jayco, Inc. 1103-85M Litho in U.S.A.